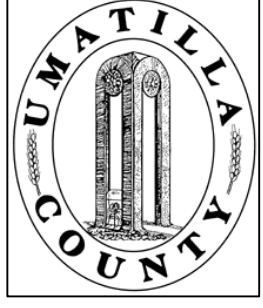


This map was prepared for Assessment purposes only.



SEC 9 T1S R32E WM UMATILLA COUNTY, OR

SCALE 1" = 400'

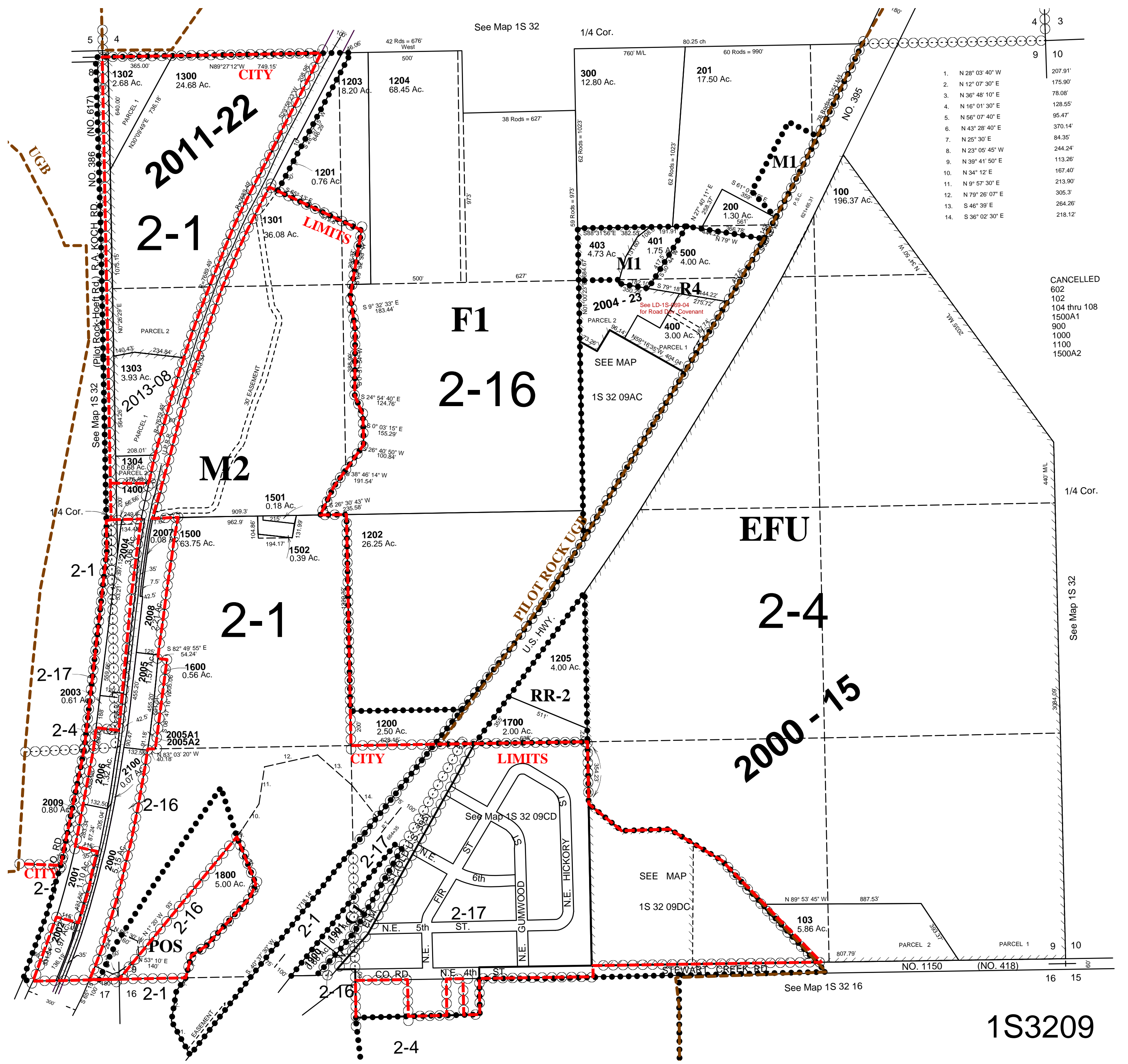
4/21/04

1S3209

AERIAL PHOTO NO. NZ-7P-27

See FIRM for areas subject to flooding

PILOT ROCK CITY & URBAN GROWTH AREA



1S3209