

This map was prepared for Assessment & Taxation purposes only and was not prepared nor is it suitable for legal, engineering or surveying purposes.

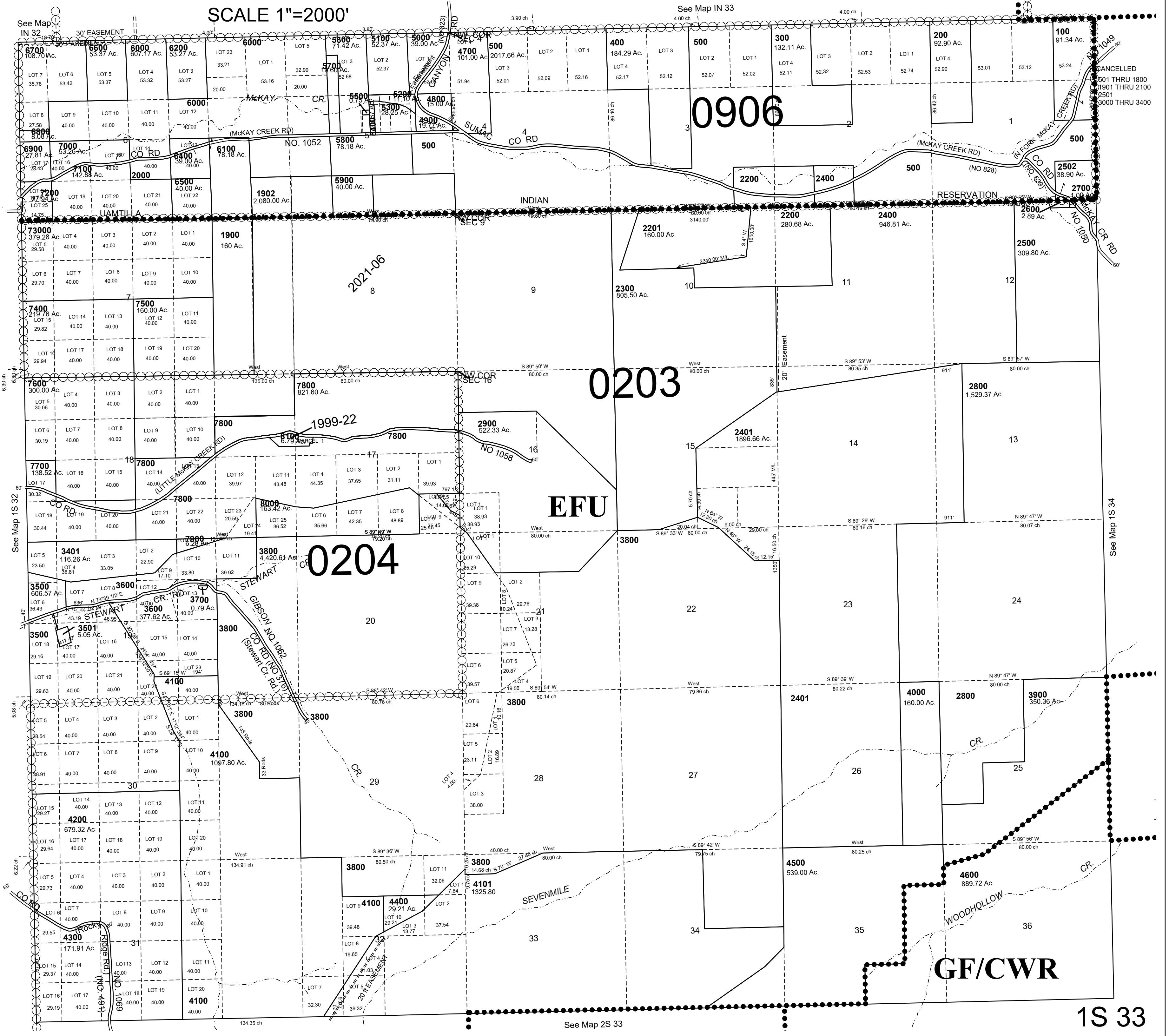
T1S R33E WM UMATILLA COUNTY

5/21/21

1S 33

AERIAL PHOTO NO. 7P 17-23, 74-79 & 98-106

SCALE 1"=2000'



CANCELLED
1901 THRU 1800
1901 THRU 2100
2501
3000 THRU 3400

See Map 1S 34

See Map 2S 33