

This map was prepared for assessment purposes only.

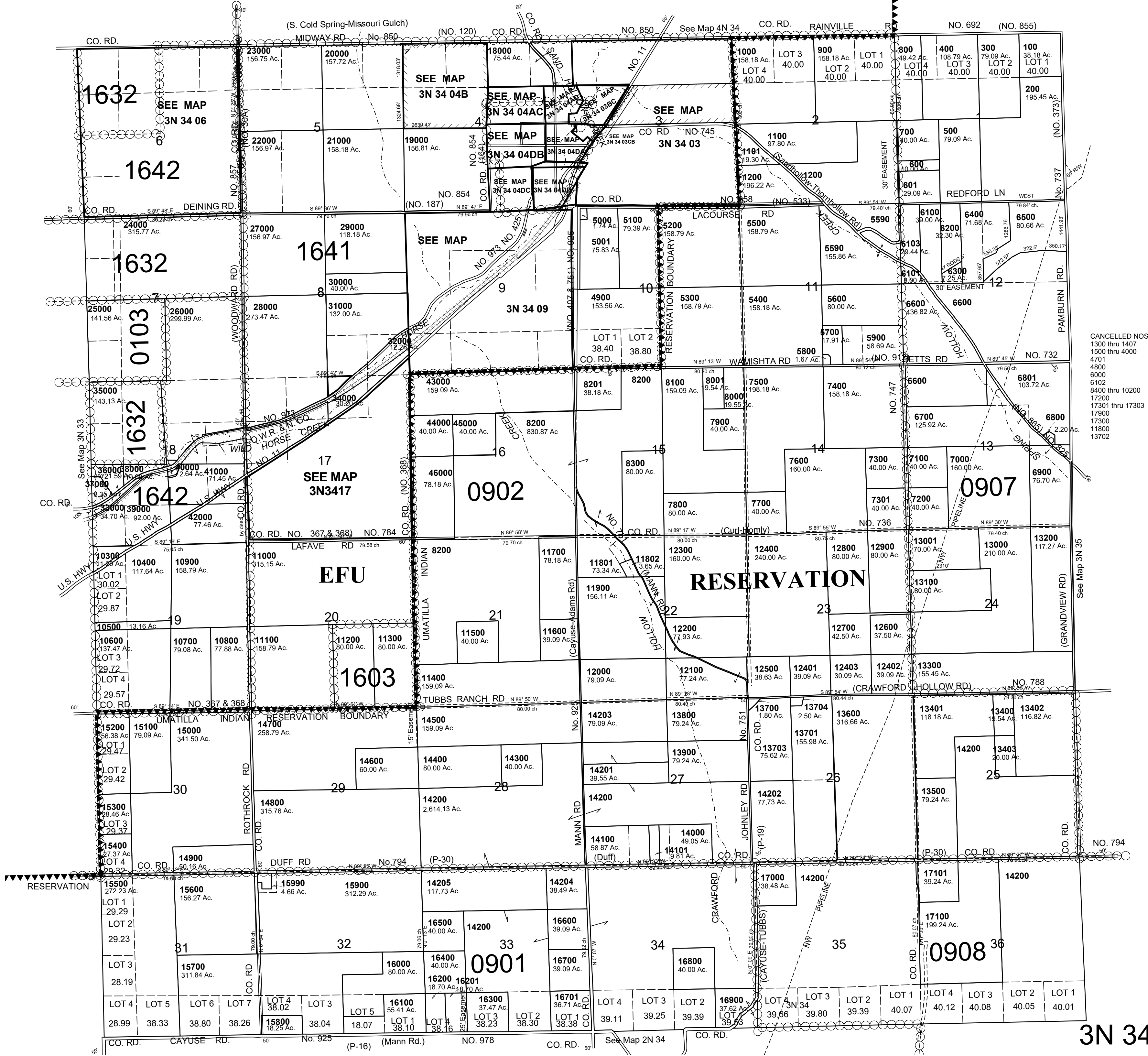
SCALE 1"=2000'

UMATILLA COUNTY T3N R34E WM

5/19/2021

3N 34

AERIAL PHOTO NO. 5P 167-171, 4P 153-158, 122-127



CANCELLED NOS
1300 thru 1407
1500 thru 4000
4701
4800
6000
6102
6400 thru 10200
17200
17301 thru 17303
17900
17300
11800
13702

3N 34