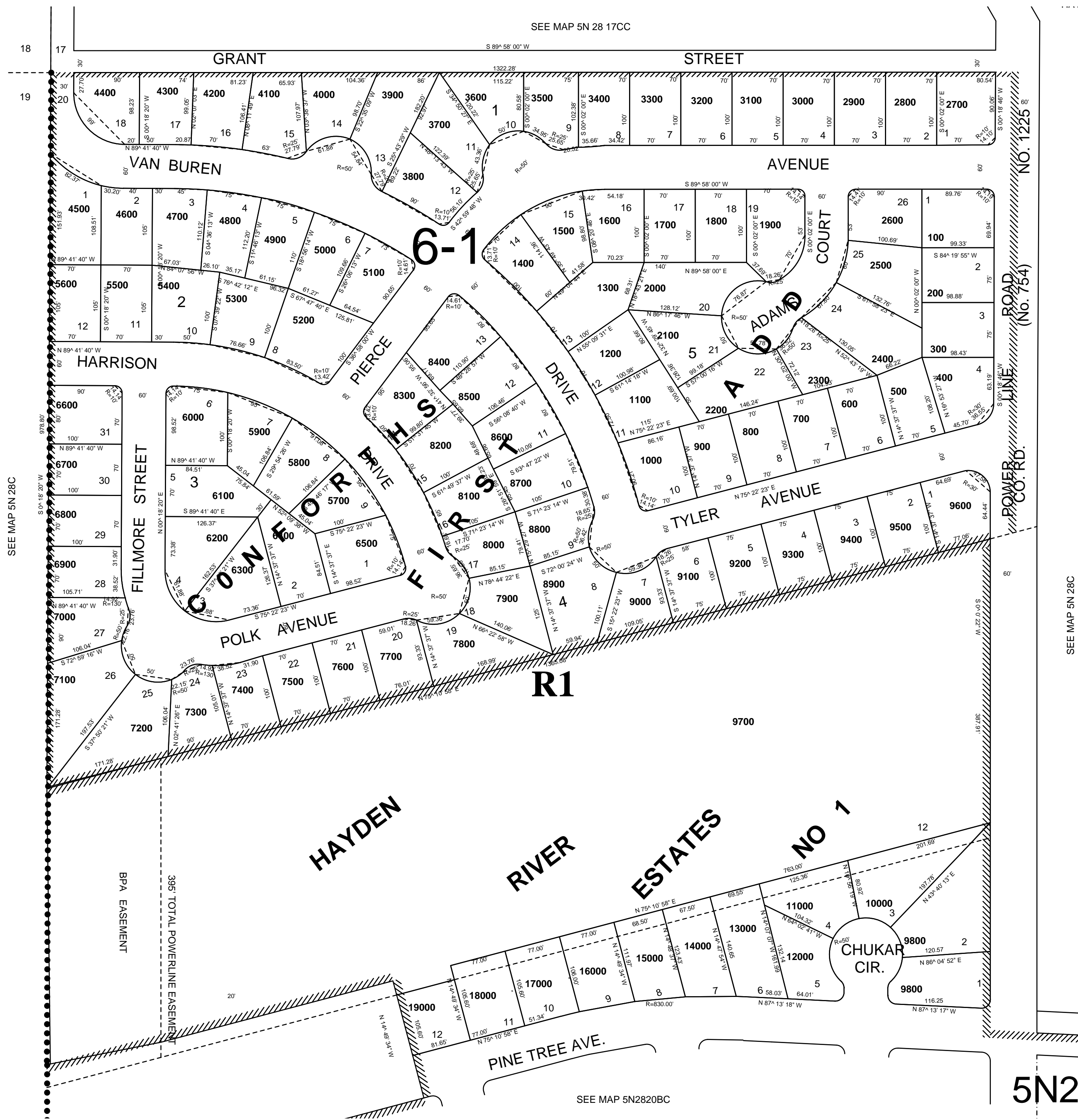


This map was prepared for assessment purposes

NW1/4 NW1/4 SEC 20 T5NR28E WM UMATILLA COUNTY

SCALE 1"=100'

5N2820BB
Aerial Phot No. NZ-1P-123
UMATILLA
CONFORTHS FIRST ADD
HAYDEN RIVER EST NO 1
City of Umatilla



5N2820BB