

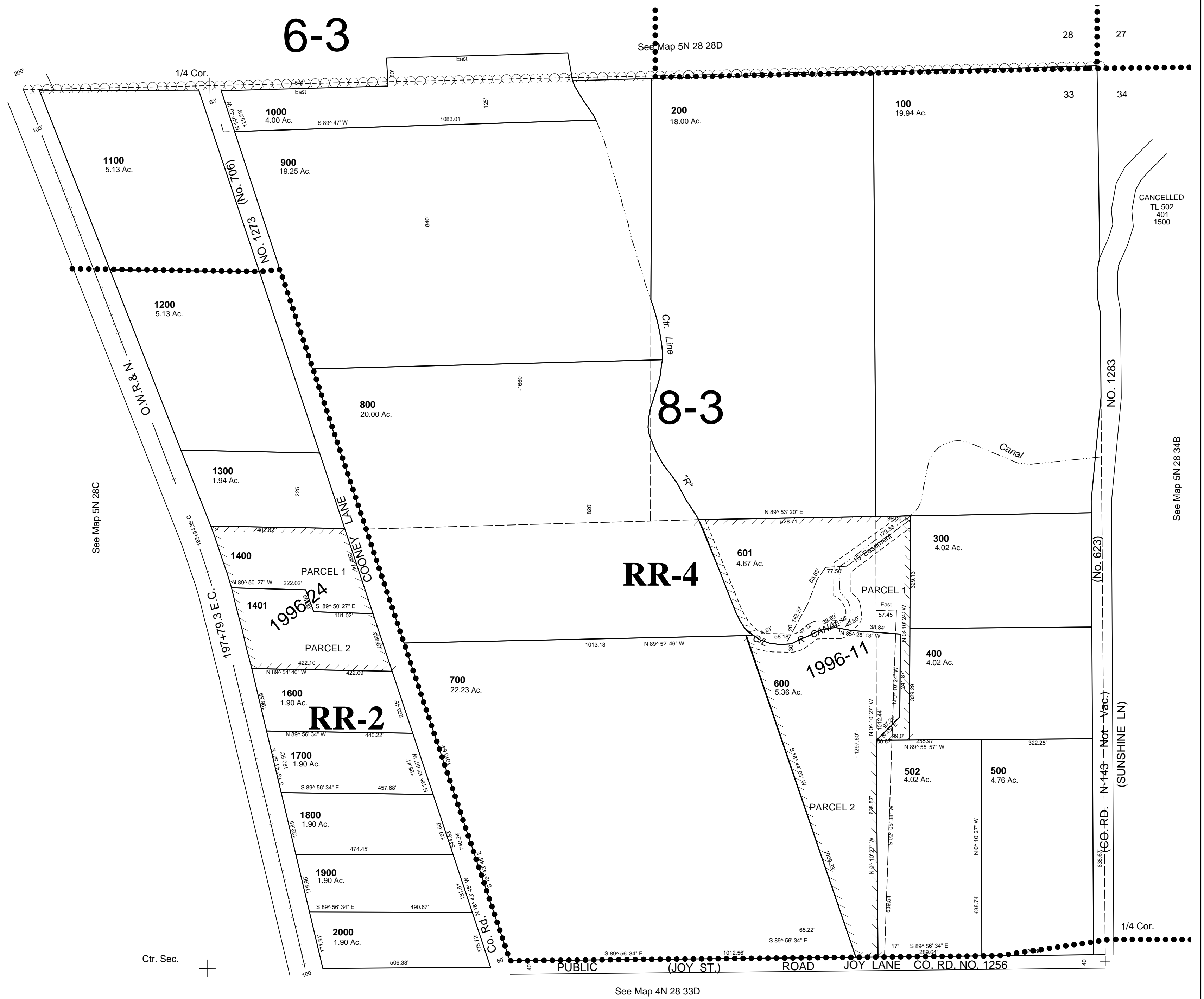
This map was prepared for assessment purposes

NE 1/4 SEC 33 T5N R28E WM
UMATILLA COUNTY
SCALE 1"=200'

9/25/06

5N 28 33A
AERIAL PHOTO NO. 1P-105

Part in Butter Creek Critical Ground Water Area



5N 28 33A

CANCELLED
TL 502
401
1500

See Map 5N 28 34B

See Map 5N 28C

See Map 4N 28 33D

(CO. RD. - N-149 - Not - Vac.)
(SUNSHINE LN)
(No. 623)