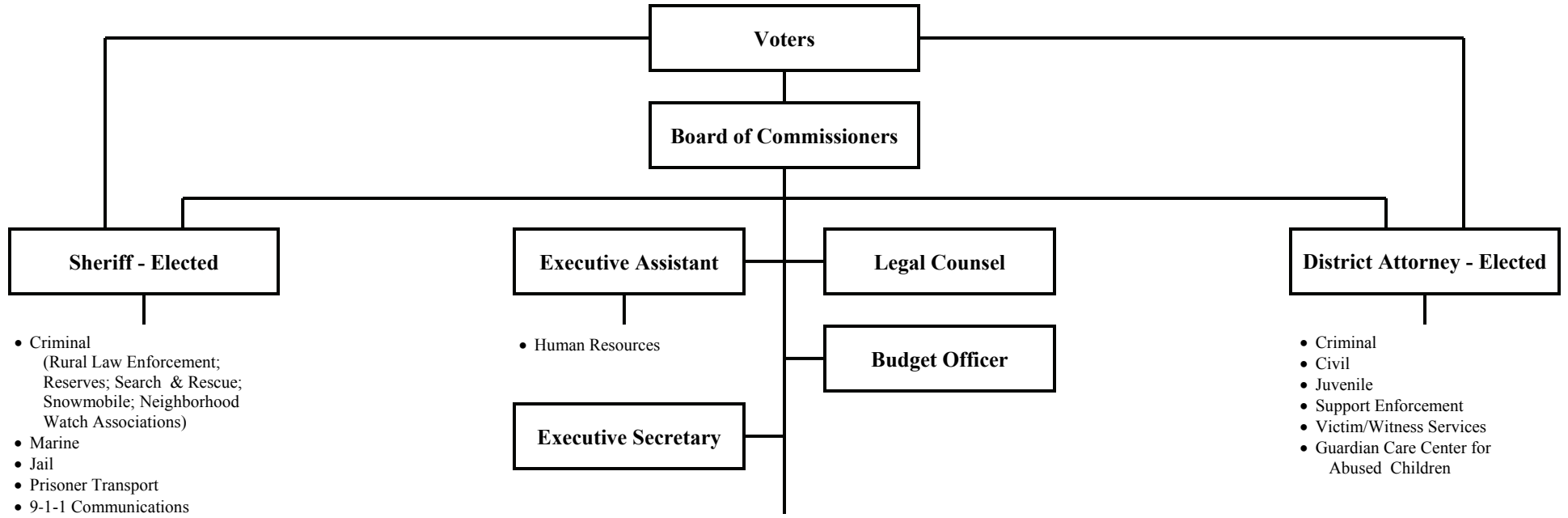


UMATILLA COUNTY ORGANIZATIONAL CHART

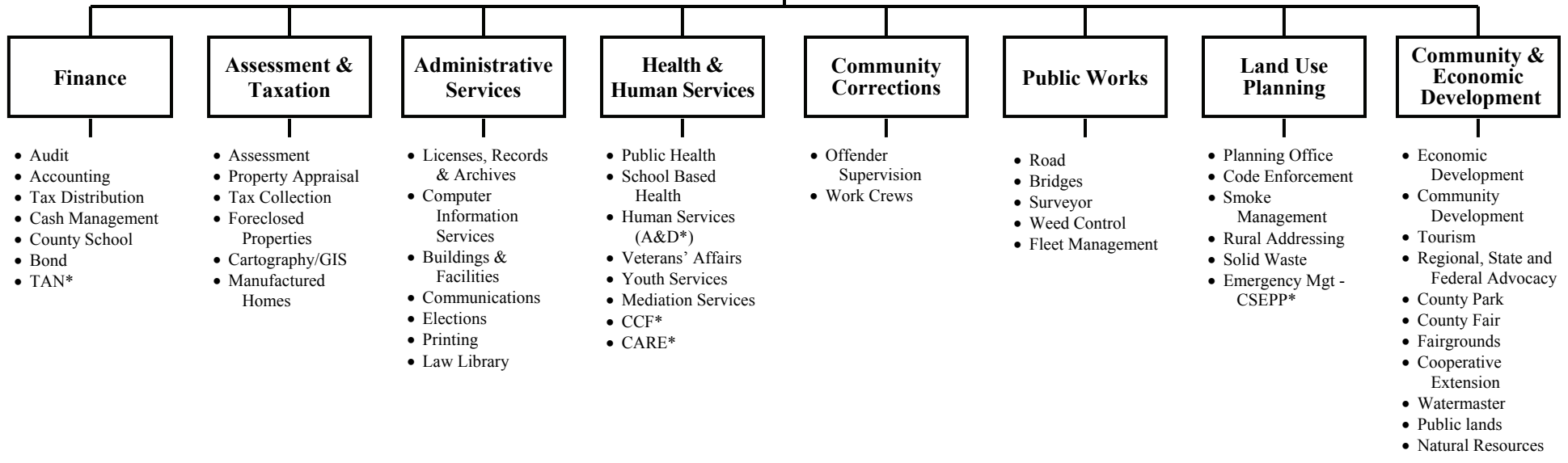


- Criminal (Rural Law Enforcement; Reserves; Search & Rescue; Snowmobile; Neighborhood Watch Associations)
- Marine
- Jail
- Prisoner Transport
- 9-1-1 Communications

- Human Resources

- Criminal
- Civil
- Juvenile
- Support Enforcement
- Victim/Witness Services
- Guardian Care Center for Abused Children

DEPARTMENTS



- Audit
- Accounting
- Tax Distribution
- Cash Management
- County School
- Bond
- TAN*

- Assessment
- Property Appraisal
- Tax Collection
- Foreclosed Properties
- Cartography/GIS
- Manufactured Homes

- Licenses, Records & Archives
- Computer Information Services
- Buildings & Facilities
- Communications
- Elections
- Printing
- Law Library

- Public Health
- School Based Health
- Human Services (A&D*)
- Veterans' Affairs
- Youth Services
- Mediation Services
- CCF*
- CARE*

- Offender Supervision
- Work Crews

- Road
- Bridges
- Surveyor
- Weed Control
- Fleet Management

- Planning Office
- Code Enforcement
- Smoke Management
- Rural Addressing
- Solid Waste
- Emergency Mgt - CSEPP*

- Economic Development
- Community Development
- Tourism
- Regional, State and Federal Advocacy
- County Park
- County Fair
- Fairgrounds
- Cooperative Extension
- Watermaster
- Public lands
- Natural Resources

*TAN = Tax Anticipation Notes
 *BOPTA = Board of Property Tax Appeals
 *A&D = Alcohol & Drug Program

*CCF = Commission on Children and Families
 *CARE = Community Access for Resource Effectiveness Program
 *CSEPP = Chemical Stockpile Emergency Preparedness Program