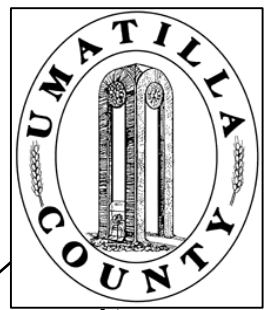


This map was prepared for Assessment & Taxation purposes only and was NOT prepared nor is it suitable for legal, engineering or surveying purposes.

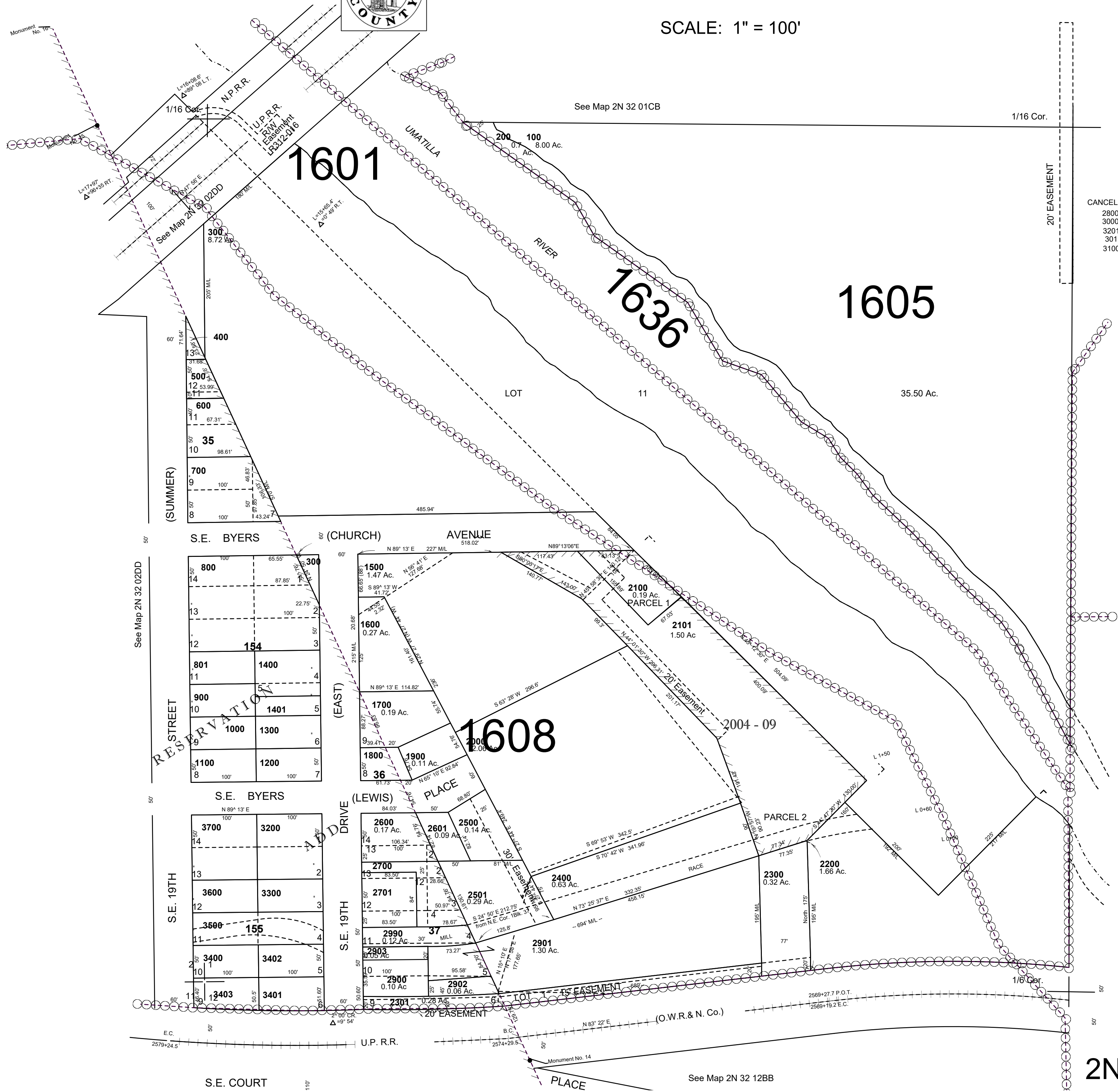


SW 1/4 SW 1/4 SEC 1 T2N R32E WM
UMATILLA COUNTY

2N3201CC

AERIAL PHOTO NO NZ4P-102

SCALE: 1" = 100'



CANCELLED
2800
3000
3201
301
3100

See Map 2N 32 01CD

REVISED: 09-28-2021

2N3201CC

See Map 2N 32 12BB