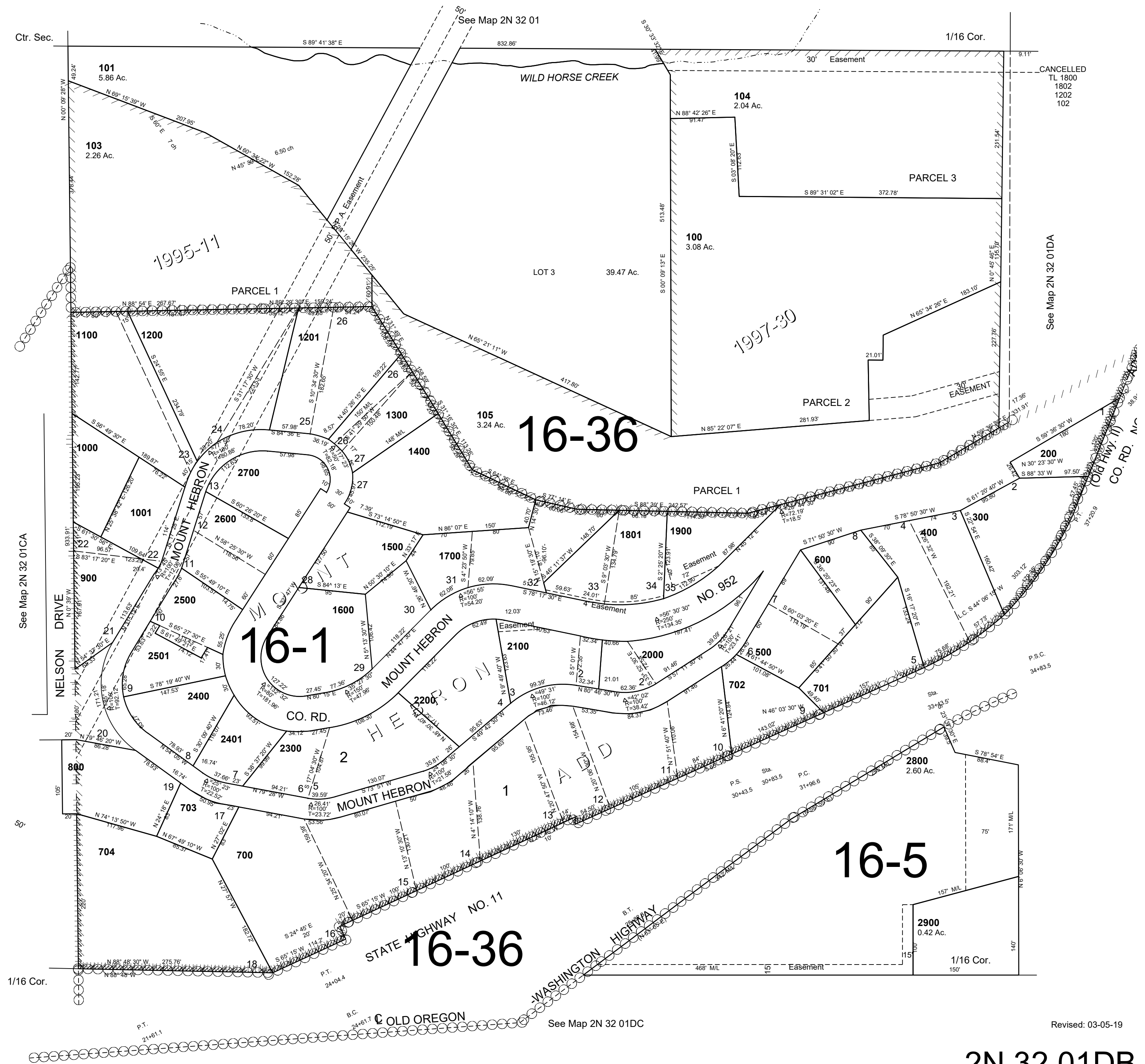


This map was prepared for Assessment & Taxation purposes only and was NOT prepared nor is it suitable for legal, engineering or surveying purposes.

NW1/4 SE1/4 SEC 1 T2N R32E WM
UMATILLA COUNTY
SCALE 1"=100'

2N 32 01DB

AERIAL PHOTO NO. NZ-4P-101



Revised: 03-05-19

2N 32 01DB