

This map was prepared for assessment purposes

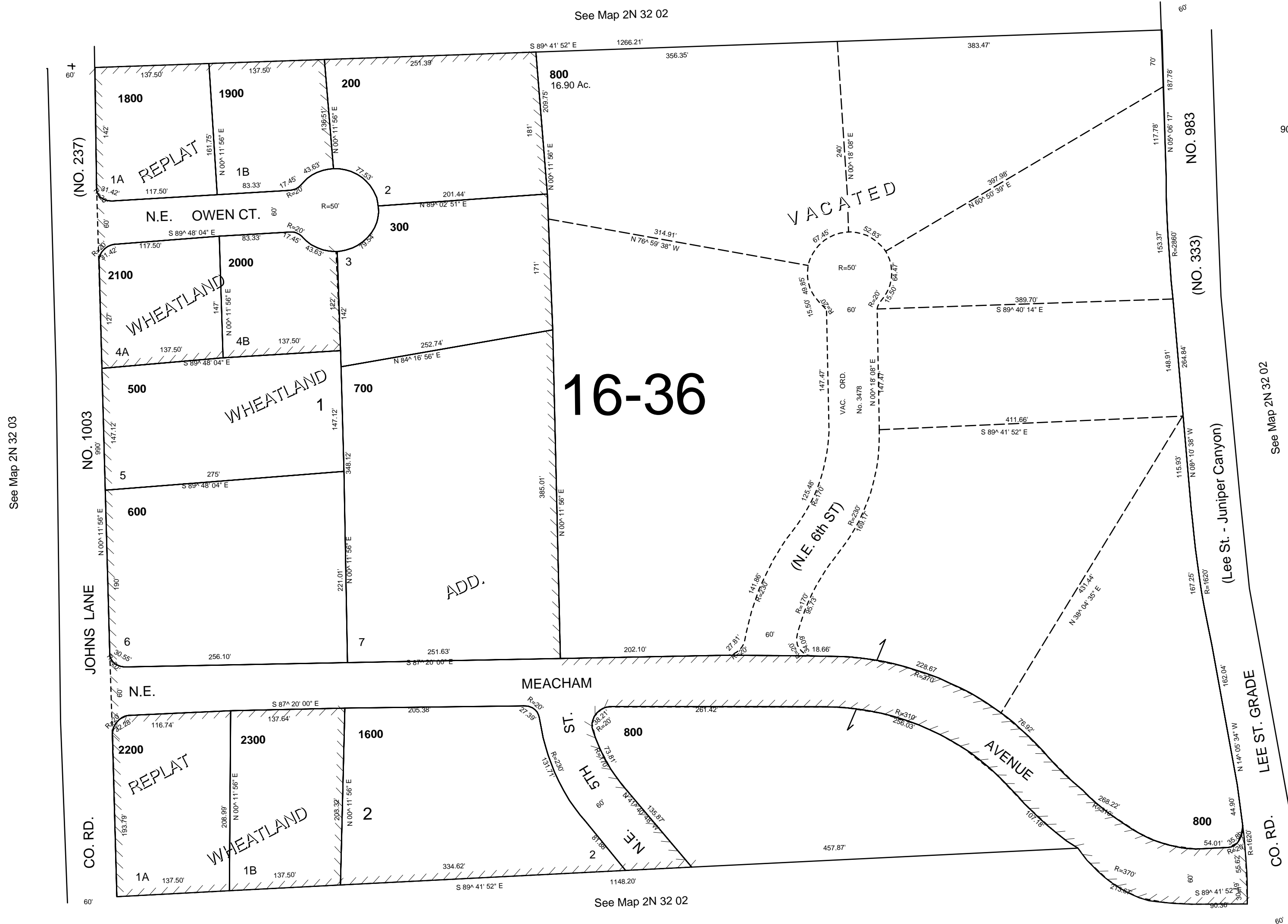
# SW 1/4 NW 1/4 SEC 2 T2N R32E WM UMATILLA COUNTY

9/19/05

## 2N 32 02BC

AERIAL PHOTO NO. 4P-103

1"=100'



CANCELLED  
TL 100  
400  
1700  
900 thru 1500 INC.

## 2N 32 02BC