

This map was prepared for Assessment & Taxation purposes only and was NOT prepared nor is it suitable for legal, engineering or surveying purposes.

SW1/4 SE1/4 T2N R32E WM UMATILLA COUNTY

2N 32 03DC

AERIAL PHOTO NO 4P-103

SCALE 1"=100'

See Map 2N 32 03DB

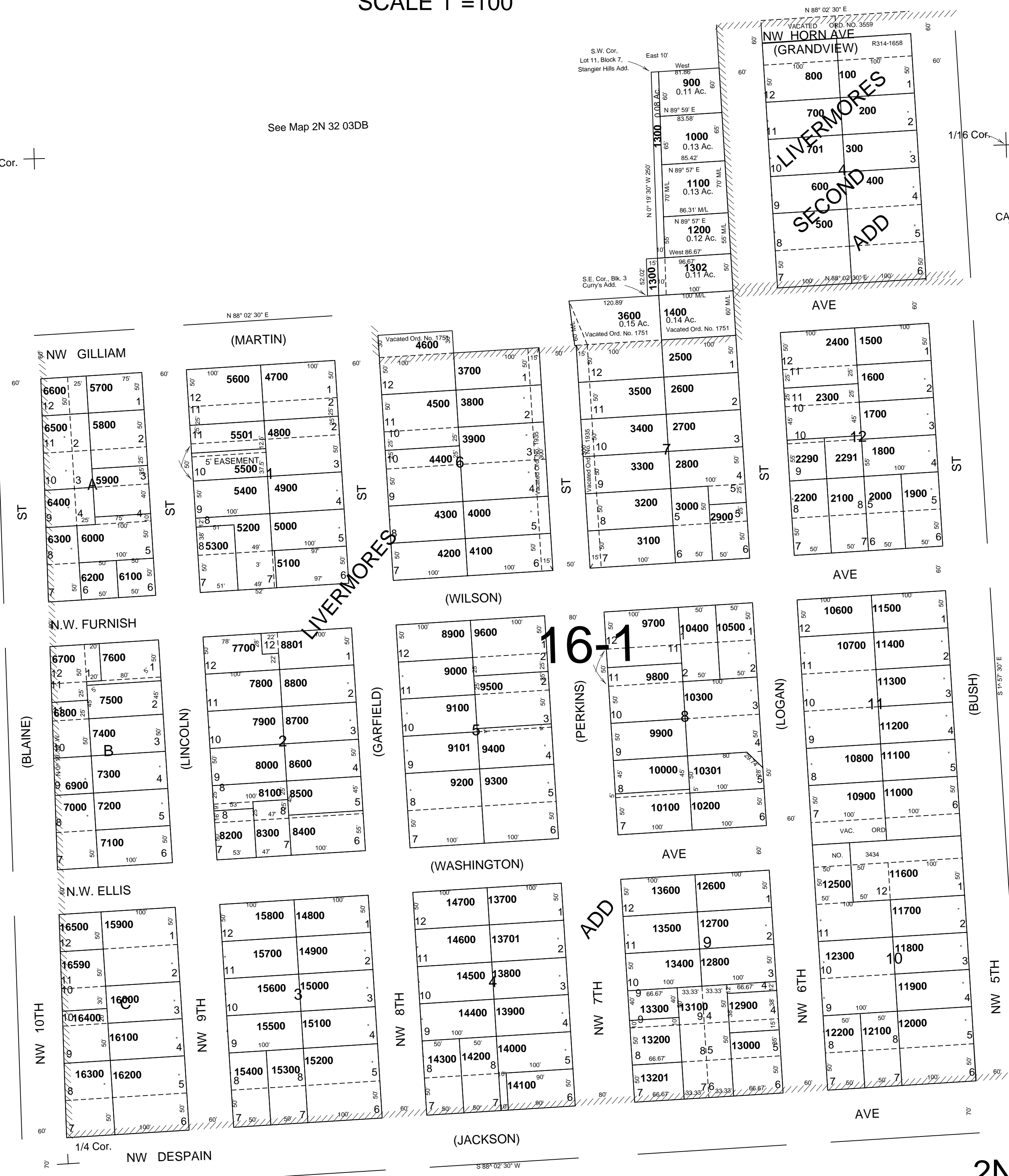
1/16 Cor.

1/16 Cor.

CANCELLED
TL 7501
9801
2280
1301
16580
12400

See Map 2N 32 03CD

See Map 2N 32 03DD



See Map 2N 32 10AB

2N 32 03DC

Revised: 8-25-10