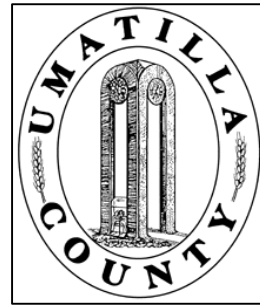


This map was prepared for Assessment & Taxation purposes only and was NOT prepared nor is it suitable for legal, engineering or surveying purposes.



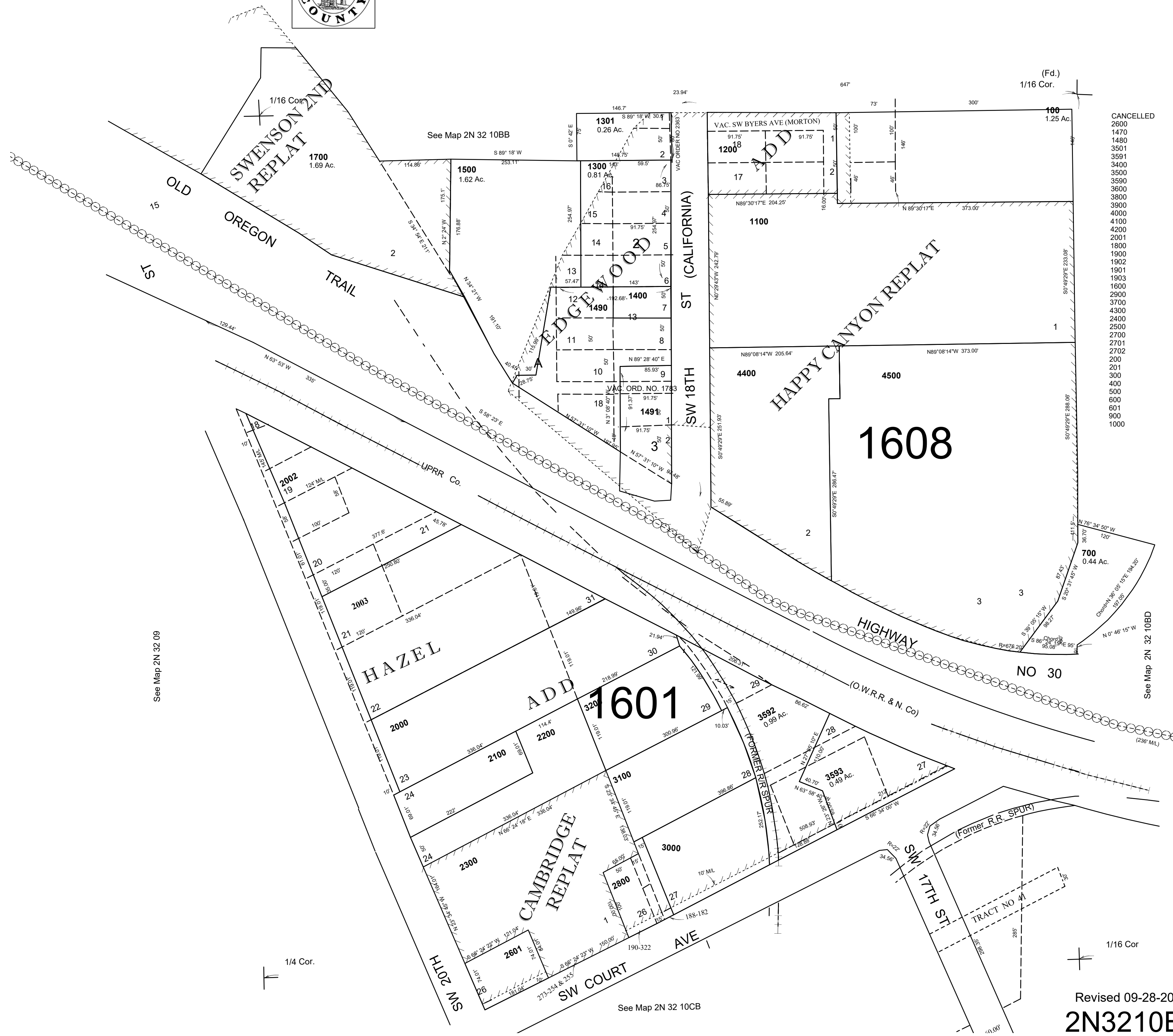
# SW 1/4 NW 1/4 SEC 10 T2N R32E WM

## UMATILLA COUNTY

SCALE: 1" = 100'

### 2N3210BC

AERIAL PHOTO NO NZ-4P-103



- CANCELLED
- 2600
- 1470
- 1480
- 3501
- 3591
- 3400
- 3500
- 3590
- 3600
- 3600
- 3900
- 3900
- 4000
- 4100
- 4200
- 2001
- 1800
- 1900
- 1902
- 1901
- 1903
- 1600
- 2900
- 3700
- 4300
- 2400
- 2500
- 2700
- 2701
- 2702
- 200
- 201
- 300
- 400
- 500
- 600
- 601
- 900
- 1000

See Map 2N 32 09

See Map 2N 32 10BD

See Map 2N 32 10CB

Revised 09-28-2021  
**2N3210BC**