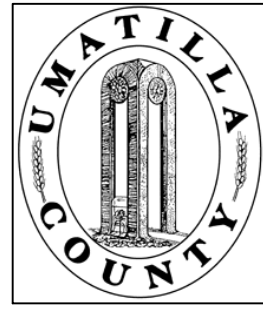


This map was prepared for Assessment & Taxation purposes only and was NOT prepared nor is it suitable for legal, engineering or surveying purposes.

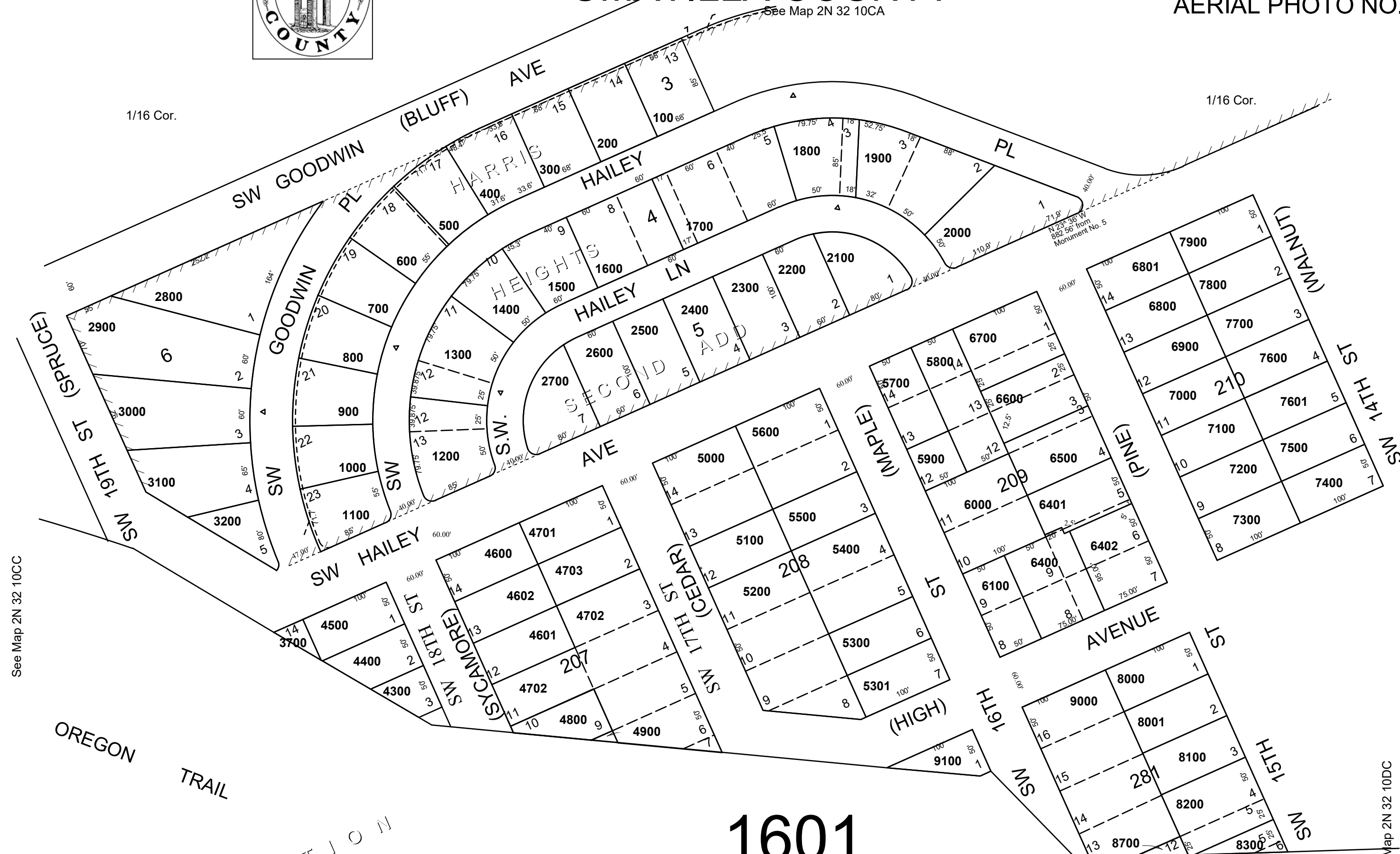


# SE1/4 SW1/4 SEC 10 T2N R32E WM UMATILLA COUNTY

## 2N 32 10CD

AERIAL PHOTO NO. 4P-103

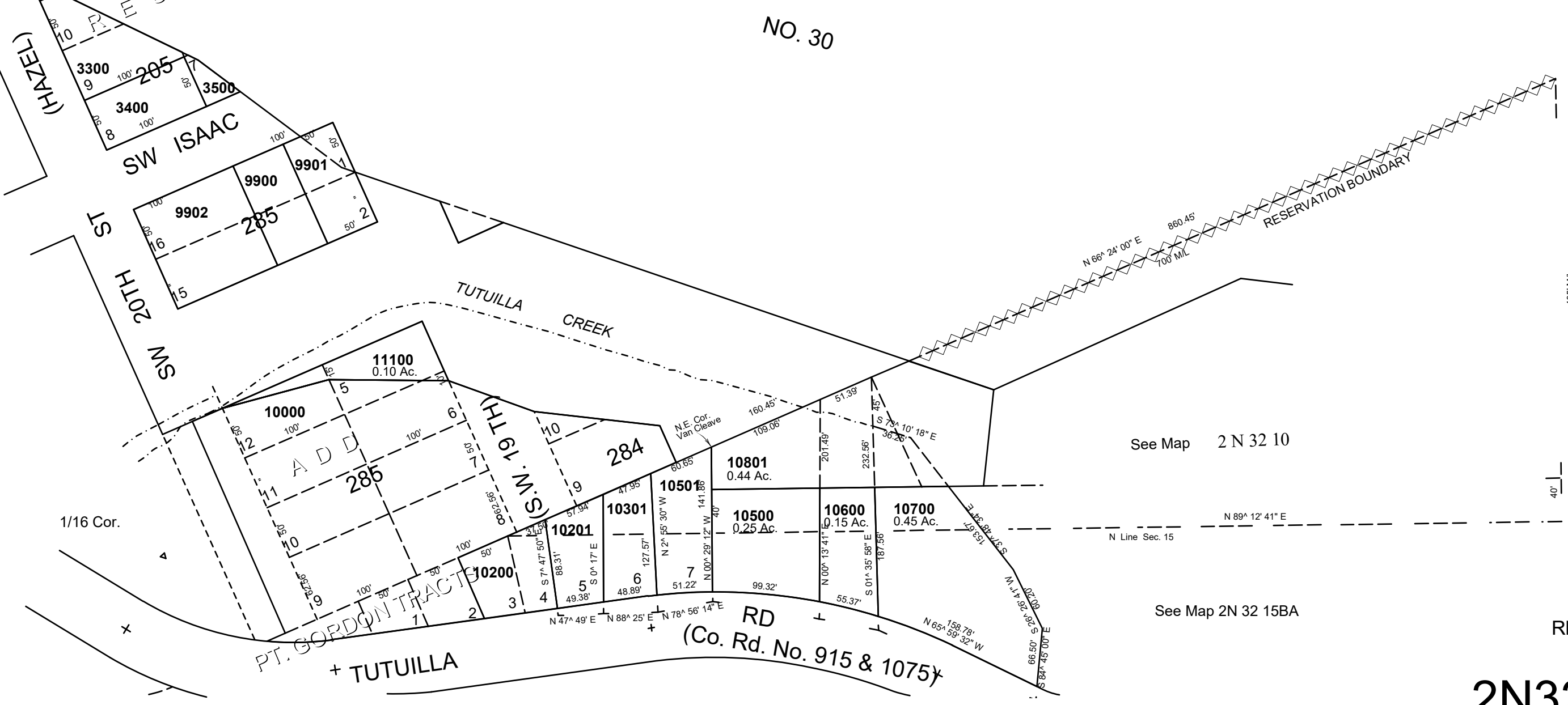
SCALE: 1" = 100'



- CANCELLED
- TL 3701
- 10400
- 3201
- 3600
- 3601
- 3702
- 4100
- 4700
- 4901
- 8301
- 8400
- 8500
- 8600
- 8701
- 9102
- 9200
- 9300
- 9400
- 9500
- 9600
- 9700
- 9802
- 10002
- 8801
- 6403
- 6404
- 3800
- 3900
- 4200
- 5201
- 4301
- 4401
- 4501
- 4801
- 3301
- 3501
- 8201
- 6200
- 6300
- 3901
- 4000
- 9101
- 9401
- 9701
- 9801
- 10001
- 10802
- 11000
- 10800
- 9800
- 10100
- 10900
- 10300
- 1601
- 8800
- 8900
- 3101
- 6601

# 1601

## RESERVATION HIGHWAY NO. 30



REVISED: 06-14-2021

## 2N3210CD