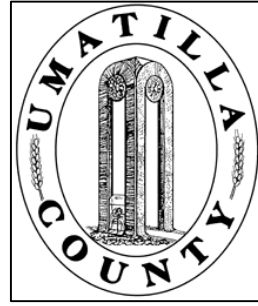


This map was prepared for Assessment & Taxation purposes only and was NOT prepared nor is it suitable for legal, engineering or surveying purposes.



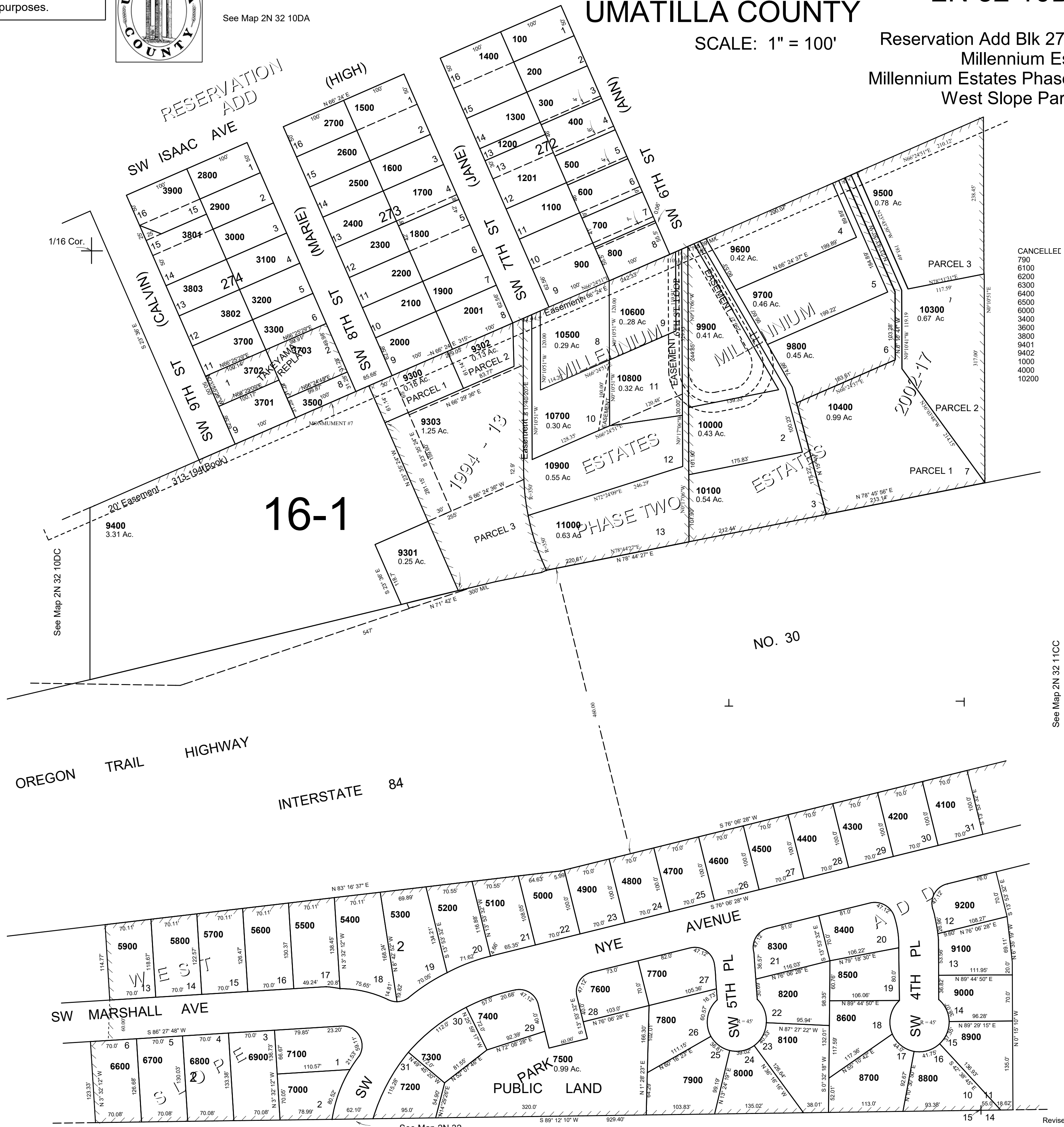
See Map 2N 32 10DA

# SE1/4 SE1/4 SEC10 T2N R32E WM UMATILLA COUNTY

## 2N 32 10DD

SCALE: 1" = 100'

Reservation Add Blk 272-274  
Millennium Estates  
Millennium Estates Phase Two  
West Slope Park Add



OREGON TRAIL HIGHWAY  
INTERSTATE 84

NO. 30

See Map 2N 32 11CC

See Map 2N 32

2N 32 10DD  
Revised: 12-06-18