

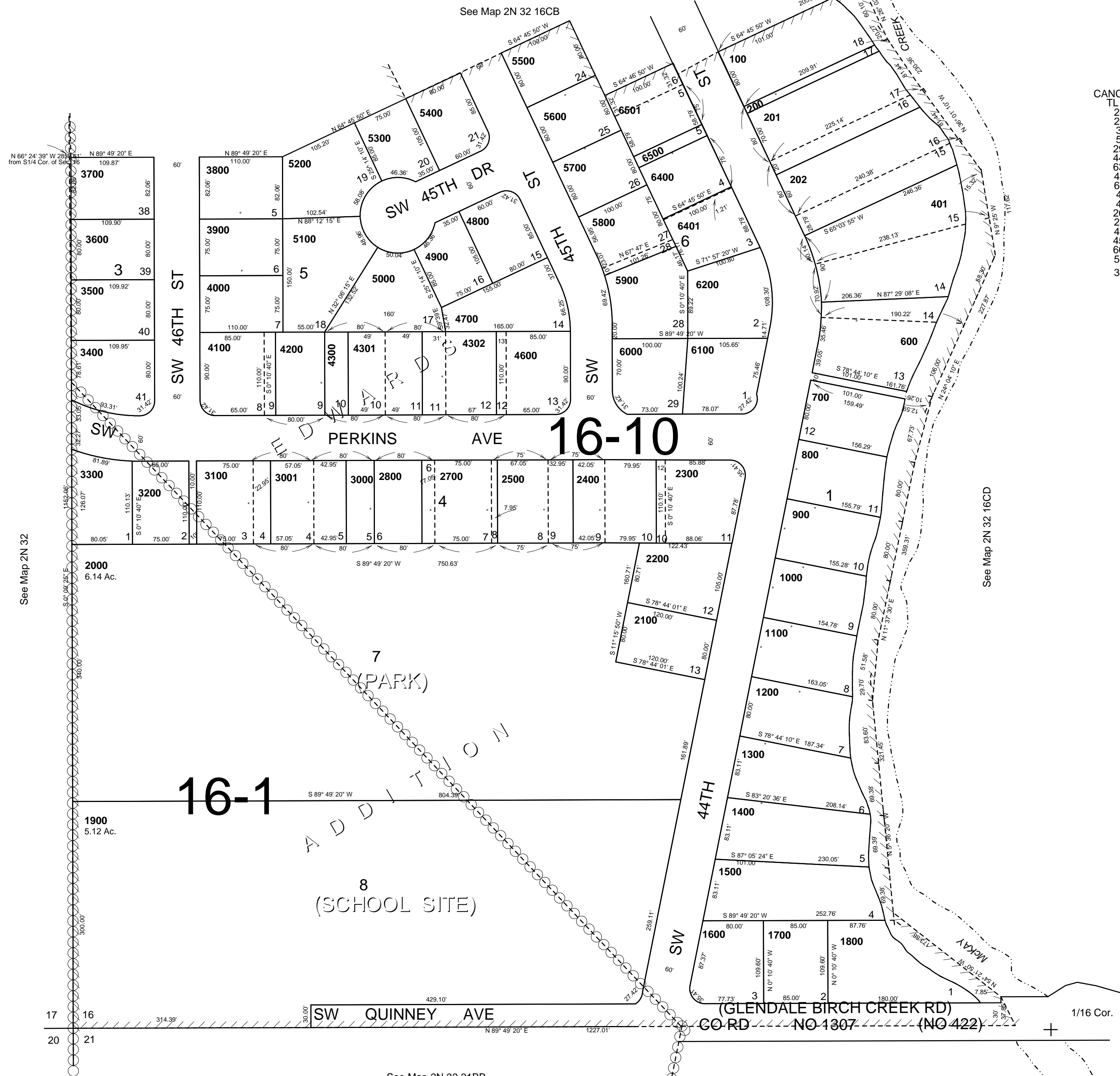
This map was prepared for Assessment & Taxation purposes only and was NOT prepared nor is it suitable for legal, engineering or surveying purposes.

SW 1/4 SW 1/4 SEC 16 T2N R32E WM UMATILLA COUNTY

2N 32 16CC

Aerial Photo No. 4P-59

SCALE 1"=100'



- CANCELLED
- TL 2501
 - 2401
 - 2601
 - 300
 - 500
 - 2900
 - 4400
 - 6300
 - 4201
 - 6601
 - 402
 - 400
 - 2600
 - 2801
 - 4501
 - 4500
 - 6600
 - 5901
 - 3002

See Map 2N 32 16CD

See Map 2N 32

See Map 2N 32 21BB

8/10/09

2N 32 16CC