

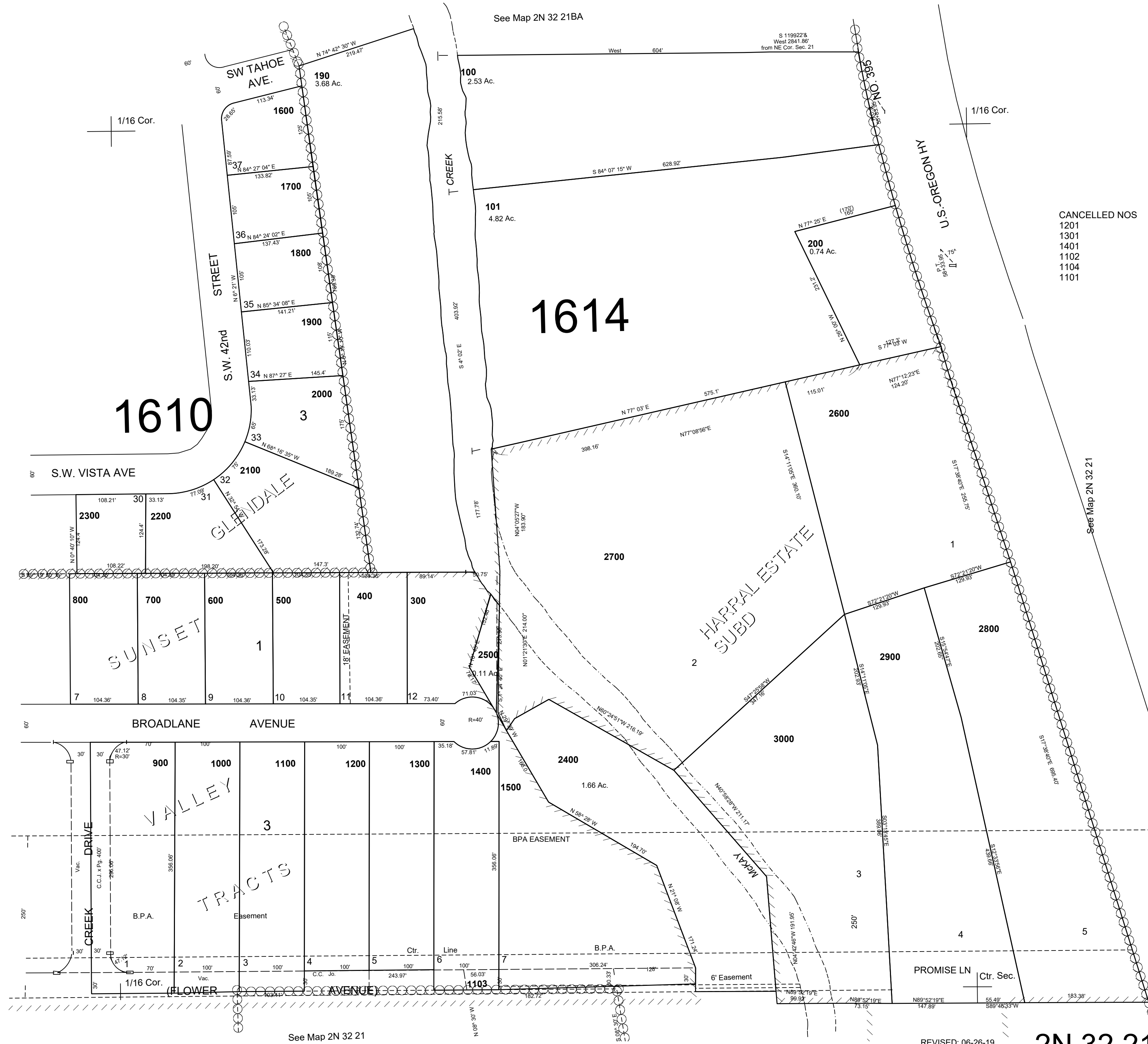
This map was prepared for assessment purposes

SE1/4 NW1/4 SEC 21 T2N R32E WM UMATILLA COUNTY

2N 32 21BD

AERIAL PHOTO NO. 4P-59

SCALE 1"=100'



CANCELLED NOS
1201
1301
1401
1102
1104
1101

2N 32 21BD