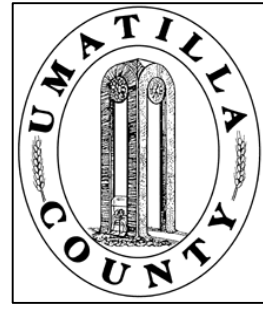


This map was prepared for Assessment & Taxation purposes only and was NOT prepared nor is it suitable for legal, engineering or surveying purposes.

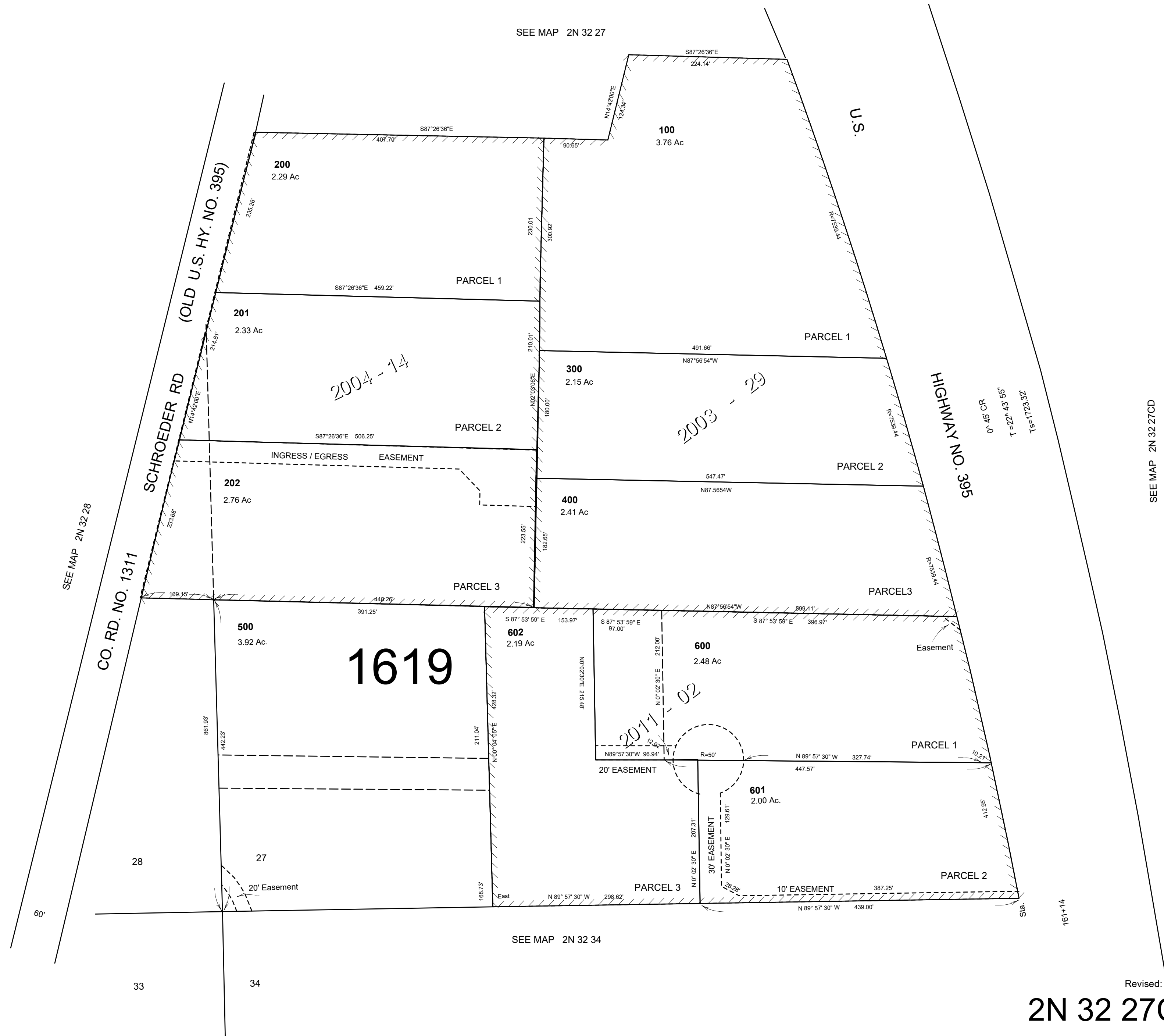


SW 1/4 SW 1/4 SEC 27 T 2N R 28E WM UMATILLA COUNTY

SCALE: 1" = 100'

2N 32 27CC

AERIAL PHOTO NO. 4P-49



2N 32 27CC