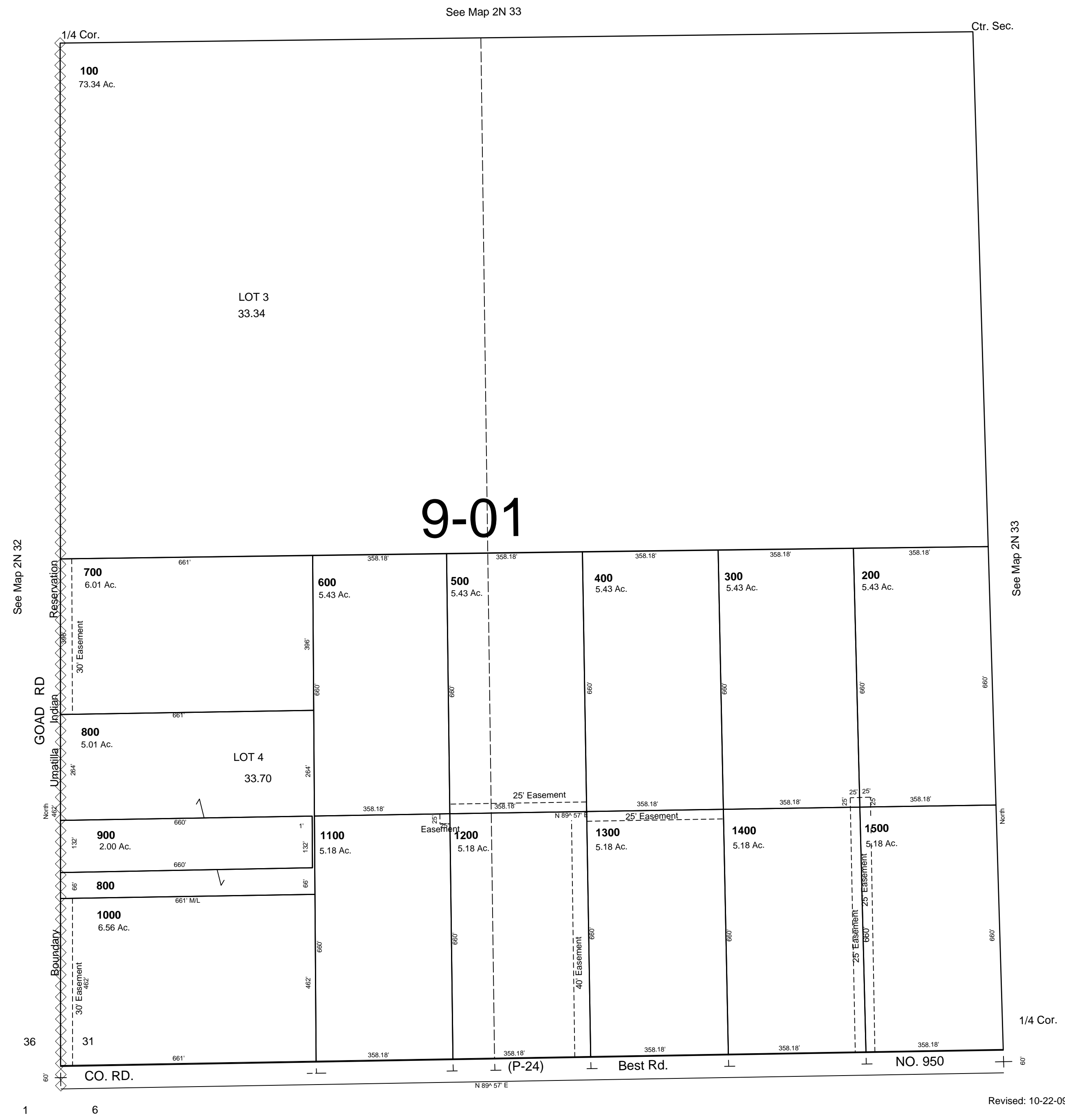


This map was prepared for Assessment & Taxation purposes only and was NOT prepared nor is it suitable for legal, engineering or surveying purposes.

SW 1/4 SEC 31 T2N R33E WM  
UMATILLA COUNTY  
SCALE 1"=200'

2N 33 31C  
AERIAL PHOTO NO. NZ 4P-47



2N 33 31C