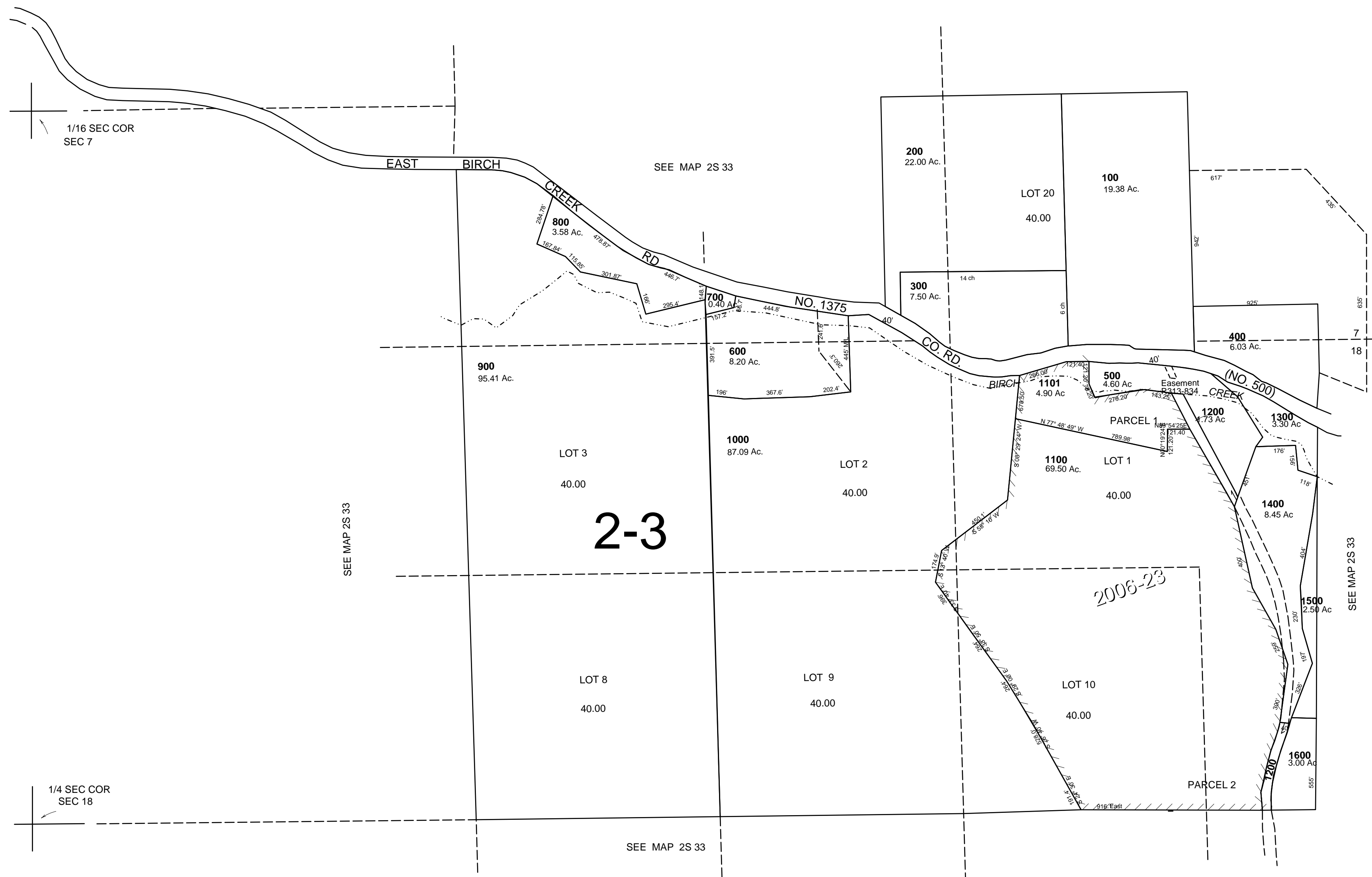


This map was prepared for Assessment & Taxation purposes only and was NOT prepared nor is it suitable for legal, engineering or surveying purposes.

SEC 18 T2S R33E WM  
 UMATILLA COUNTY  
 1"=400'

2S 33 18

AERIAL PHOTO NO. NZ 8P 15, 17 & 7P 155



Revised: 3/26/10

2S 33 18