

This map was prepared for Assessment & Taxation purposes only and was NOT prepared nor is it suitable for legal, engineering or surveying purposes.

Cancelled Tax Lots

300
400
700

SE 1/4 NE 1/4 SEC 32 T4N R29E WM

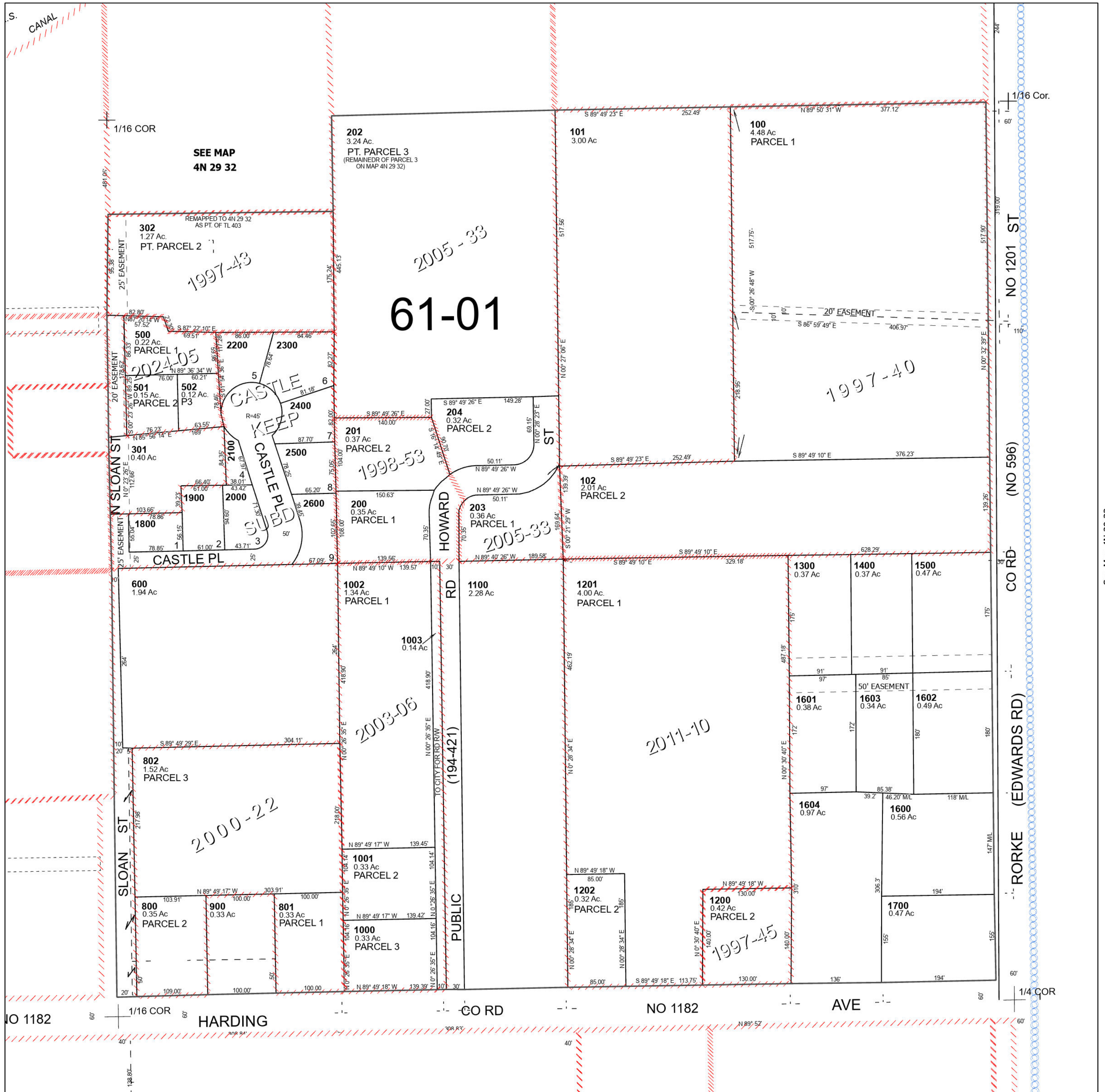
UMATILLA COUNTY

SCALE 1" = 100'

Stanfield

4N 29 32AD

See Map 4N 29 32



See Map 4N 29 33