

This map was prepared for Assessment & Taxation purposes only and was NOT prepared nor is it suitable for legal, engineering or surveying purposes.

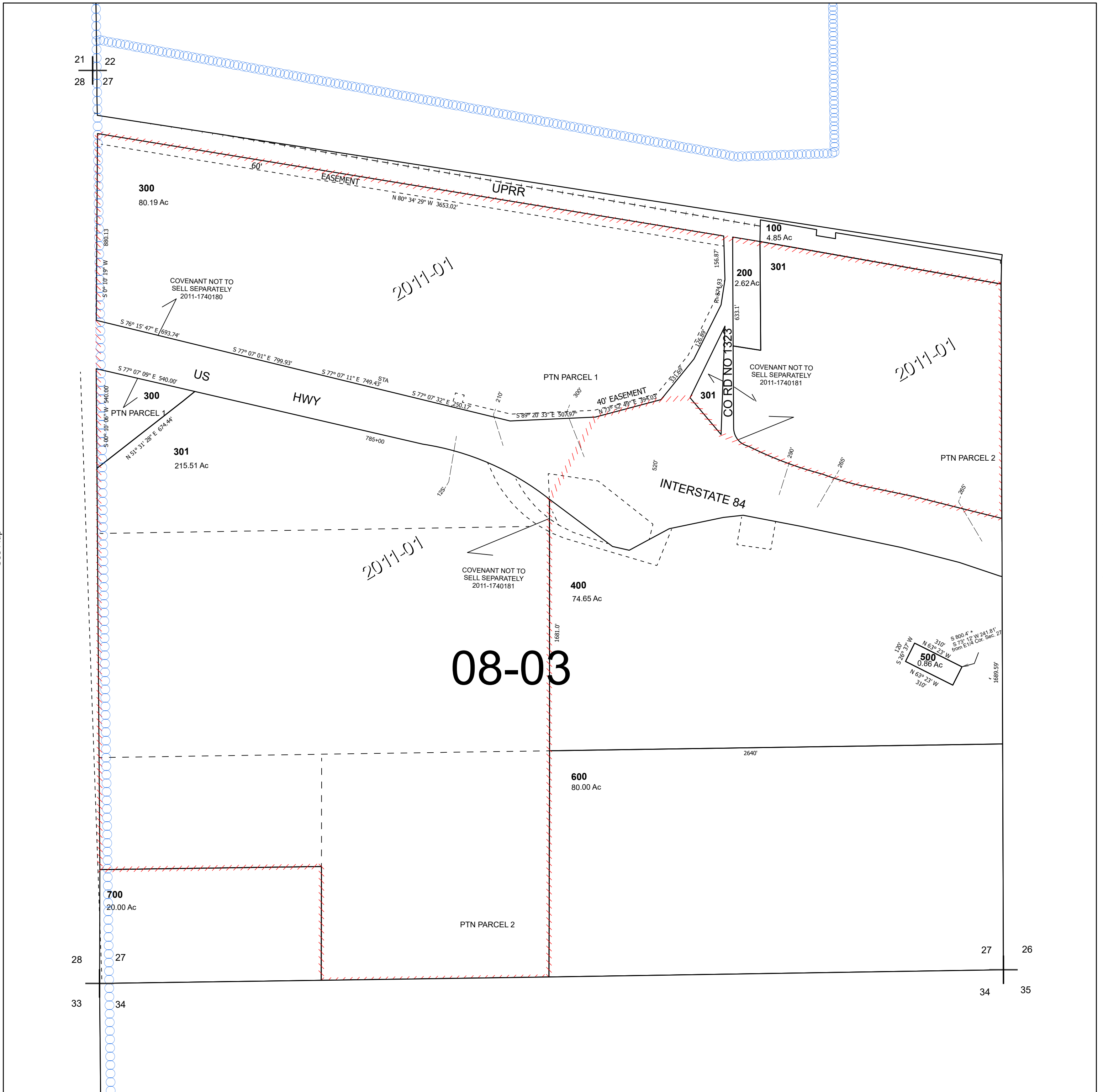
Cancelled Tax Lots

SEC 27 T4N R27E WM UMATILLA COUNTY

4N 27 27

SCALE 1" = 400'

See Map 4N 27



08-03

See Map

See Map 4N 27

4N 27 27