

This map was prepared for Assessment & Taxation purposes only and was NOT prepared nor is it suitable for legal, engineering or surveying purposes.

Cancelled Tax Lots

502
503

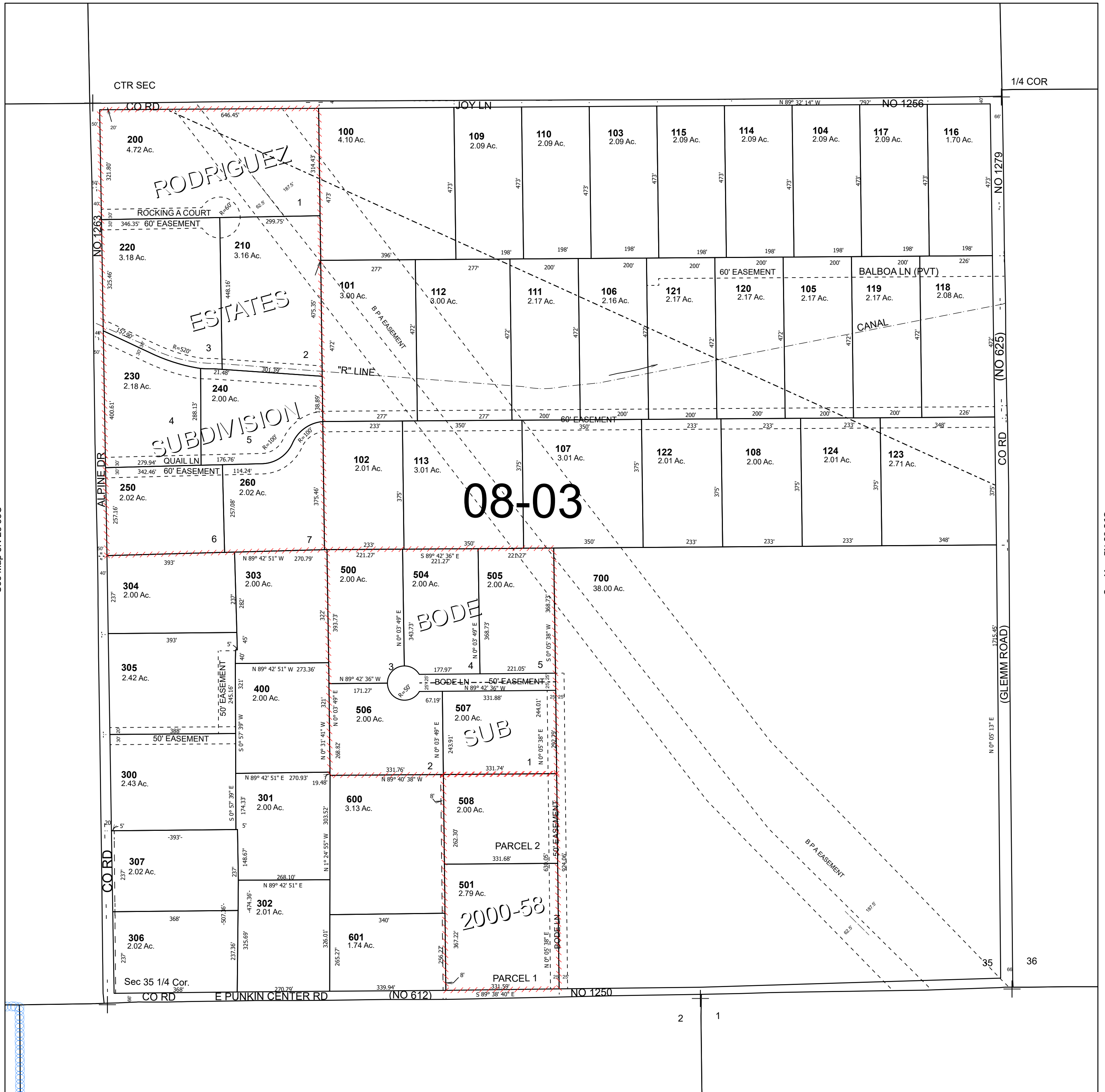
SE 1/4 SEC 35 T5N R28E WM

5N 28 35D

UMATILLA COUNTY

SCALE 1" = 200'

See Map 5N 28 35A



See Map 5N 28 35C

See Map 5N 28 36C

5N 28 35D