

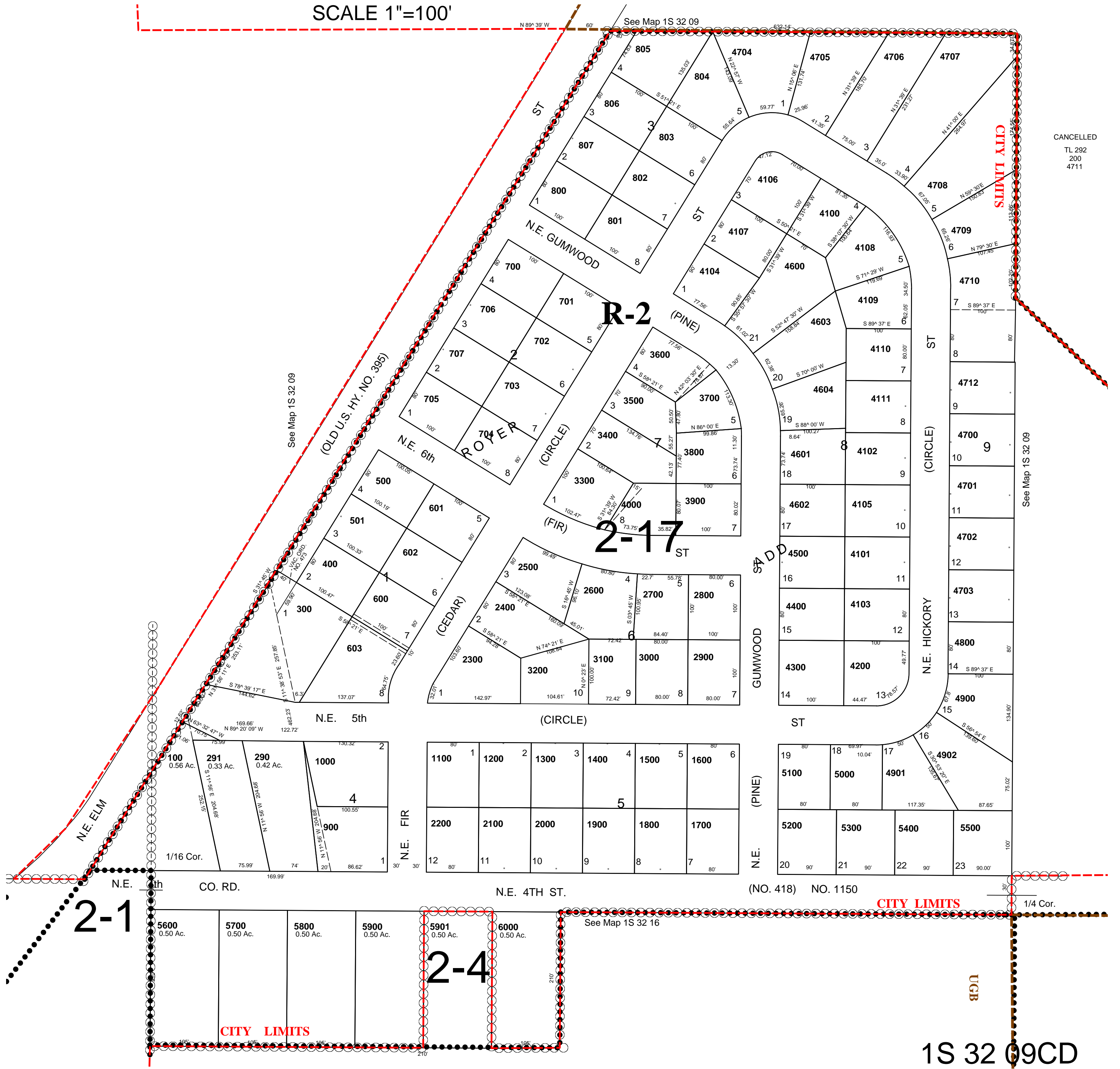
This map was prepared for assessment purposes

SE1/4 SW1/4 SEC 9 T1S R32E WM UMATILLA COUNTY

10/17/06

1S 32 09CD
AERIAL PHOTO NO. 7P-27
CITY OF PILOT ROCK

SCALE 1"=100'



CANCELLED
TL 292
200
4711

1S 32 09CD