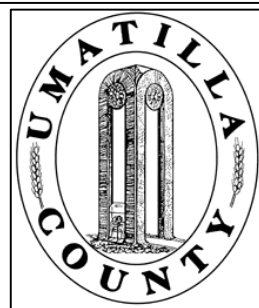


This map was prepared for Assessment purposes only.



SE 1/4 NE 1/4 SEC 17 T1S R 32E WM UMATILLA COUNTY, OR

SCALE: 1" = 100'

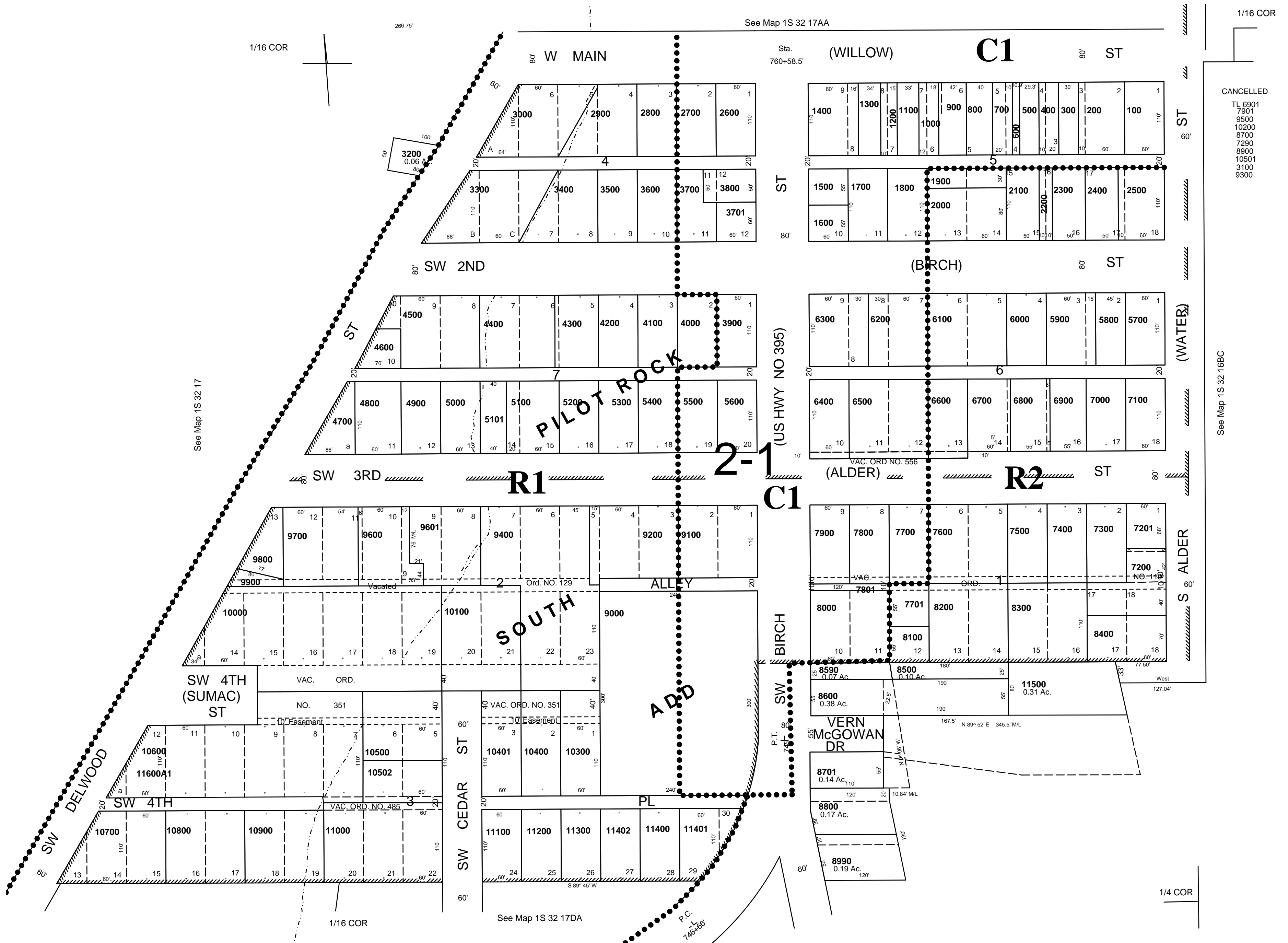
4/29/04

1S 32 17AD

AERIAL PHOTO NO. NZ-7P-70

City of Pilot Rock

See FIRM for areas subject to flooding



1S 32 17AD