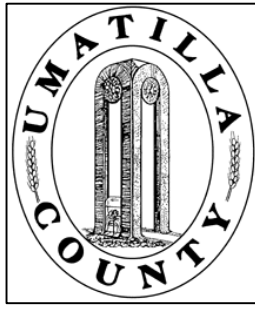


This map was prepared for Assessment purposes only.



NW1/4 SE1/4 SEC 17 T1S R32E WM

10/17/06

1S 32 17DB

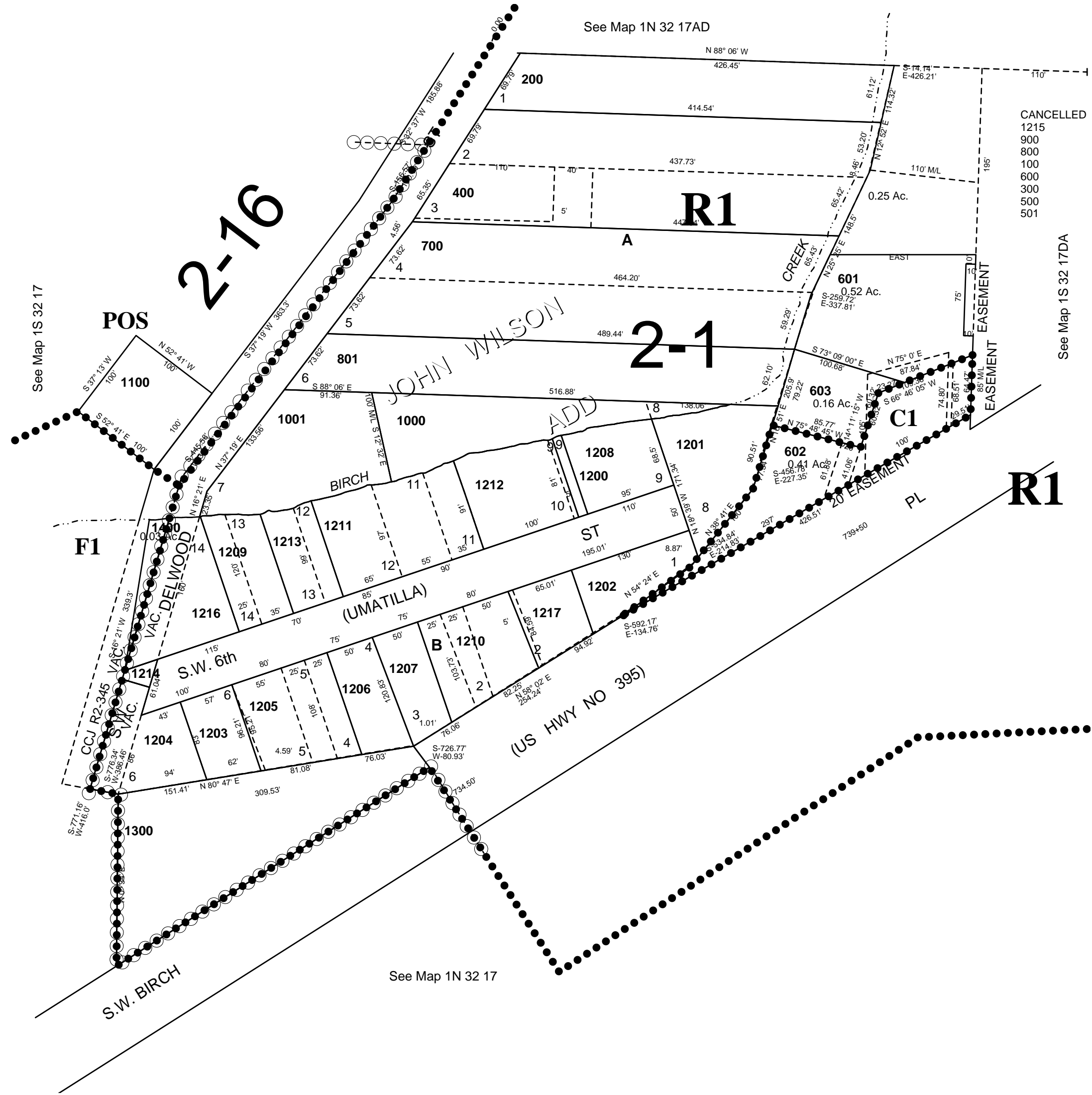
UMATILLA COUNTY, OR

AERIAL PHOTO NO. 7P-69

SCALE: 1" = 100'

City of Pilot Rock

See FIRM for areas subject to flooding



1S 32 17DB