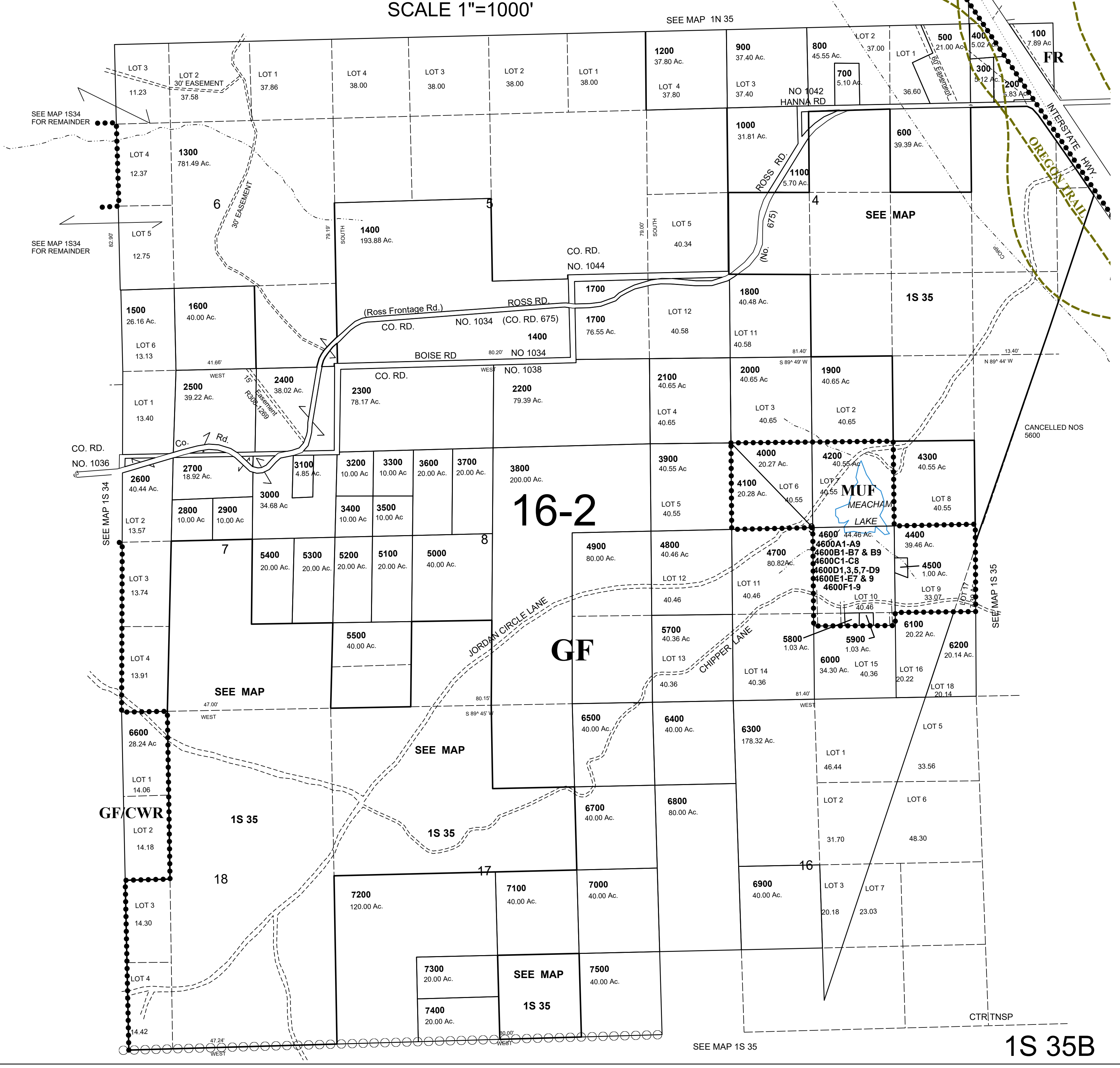


This map was prepared for Assessment & Taxation purposes only and was NOT nor is it suitable for legal, engineering or surveying purposes.

NW1/4 T1S R35E WM UMATILLA COUNTY SCALE 1"=1000'

12/02/2020

1S 35B
AERIAL PHOTOS NO 7P 5-10 & 85-94



SEE MAP 1S 35

1S 35B