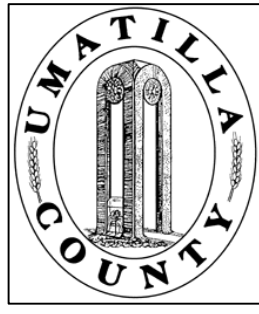


This map was prepared for Assessment purposes only.



SW1/4 SE1/4 SEC 9 T1S R 32E WM

1/13/05

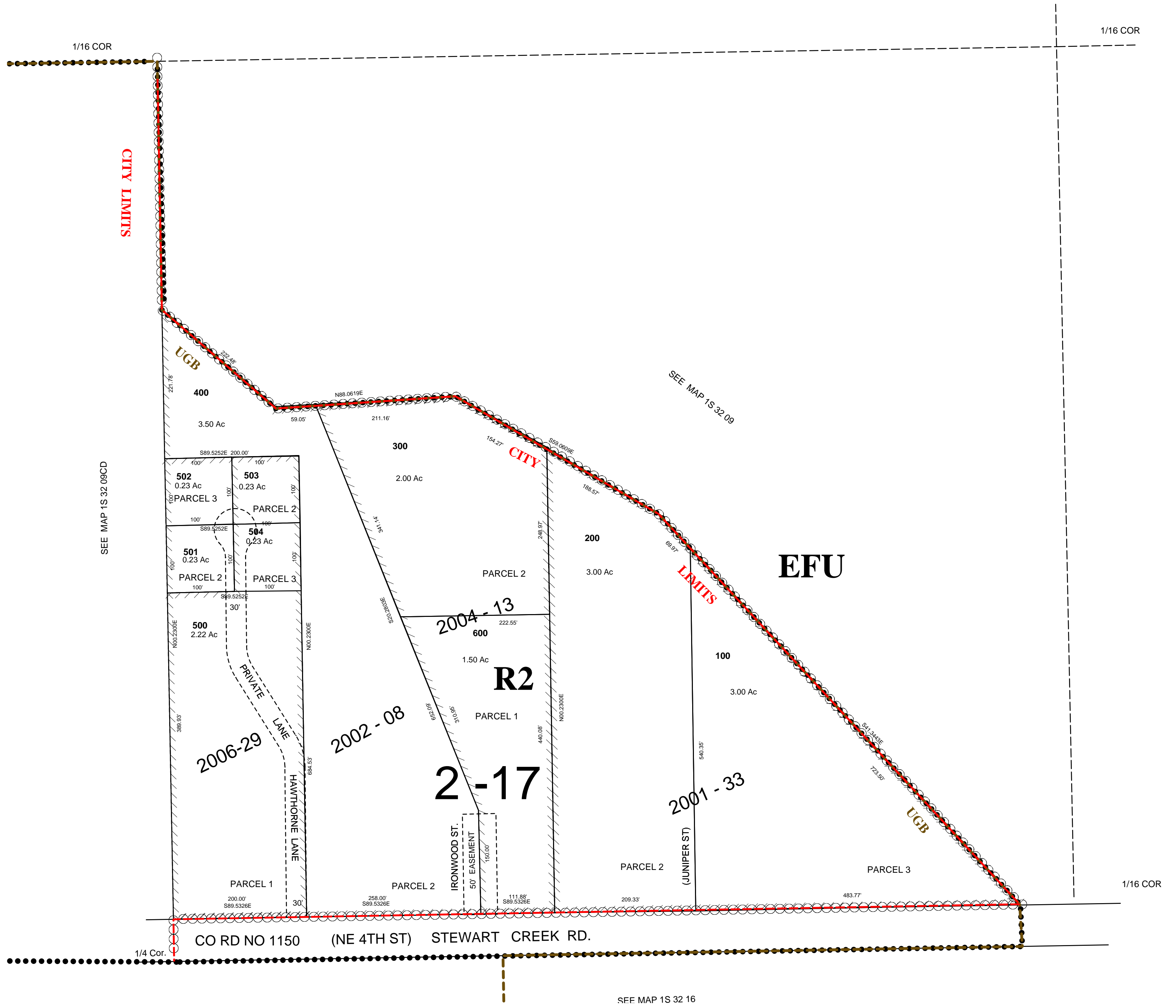
1S 32 09DC

UMATILLA COUNTY, OR

AERIAL PHOTO NO. NZ-7P-27

CITY OF PILOT ROCK

SCALE: 1" =100'



1S 32 09DC