

This map was prepared for Assessment & Taxation purposes only and was NOT prepared nor is it suitable for legal, engineering or surveying purposes.

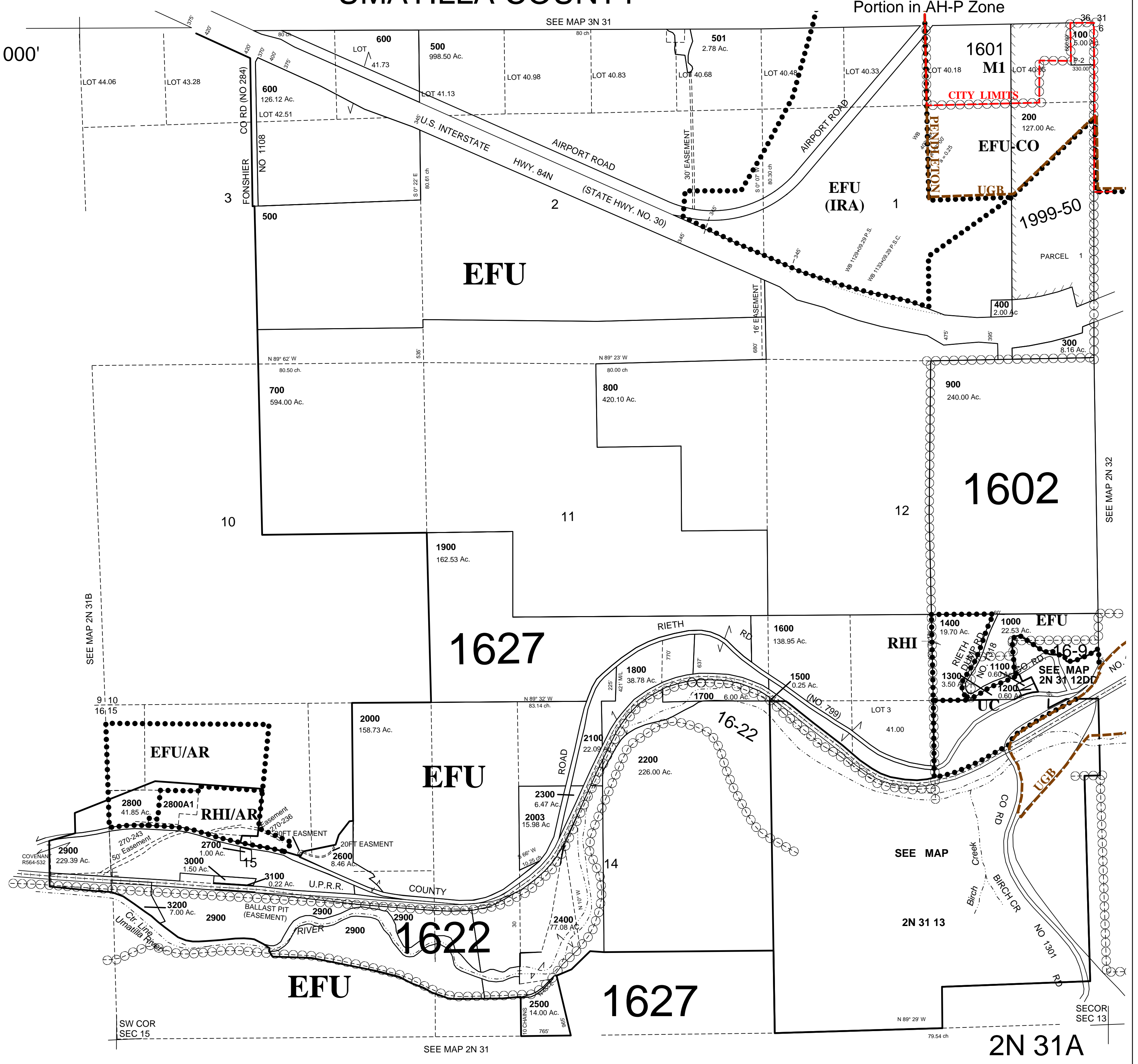
NE1/4 T2N R31E WM UMATILLA COUNTY

2/7/19

2N 31A
AERIAL PHOTO NO 2P 185, 190, 3P 23,
28, 33 & 37

See FIRM for areas subject to flooding
Portion in AH-P Zone

SCALE 1"=1000'



2N 31A