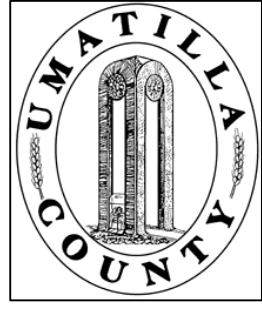


This map was prepared for Assessment & Taxation purposes only and was NOT prepared nor is it suitable for legal, engineering or surveying purposes.



SE1/4 SW1/4 SEC 3 T2N R32E WM UMATILLA COUNTY, OR

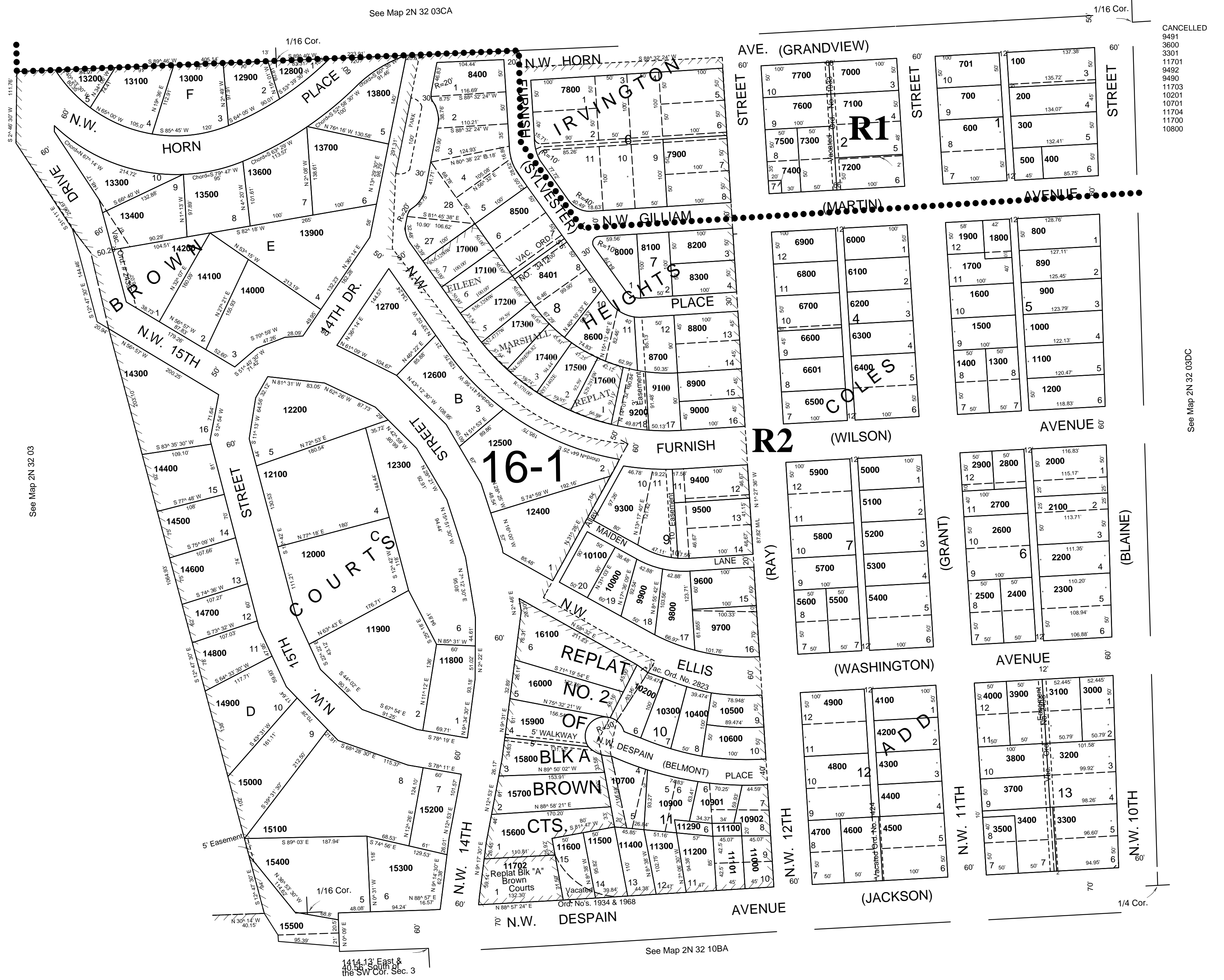
10/21/04 2N3203CD

SCALE: 1" = 100'

Pendleton
Coles Add
Brown Courts Add
Blks A-F, Lts 5-16 Blk D
Irvington Heights
Brown Courts Replat No 2
of Block A

Aerial Photo No. 4P-103
CITY OF PENDLETON
All in AH-P Overlay Zone

See Map 2N 32 03CA



CANCELLED
9491
3600
3301
11701
9482
9480
11703
10201
10701
11704
11700
10800

See Map 2N 32 03DC

2N3203CD