

This map was prepared for Assessment & Taxation purposes only and was NOT prepared nor is it suitable for legal, engineering or surveying purposes.

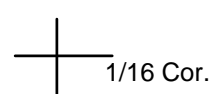
SE1/4 NW1/4 SEC 5 T2NR32E WM UMATILLA COUNTY

2N3205BD

PENDLETON

PENDAIR HEIGHTS
BLKS 30,31,41,42,47-50
LOTS 7-11 OF BLK 29

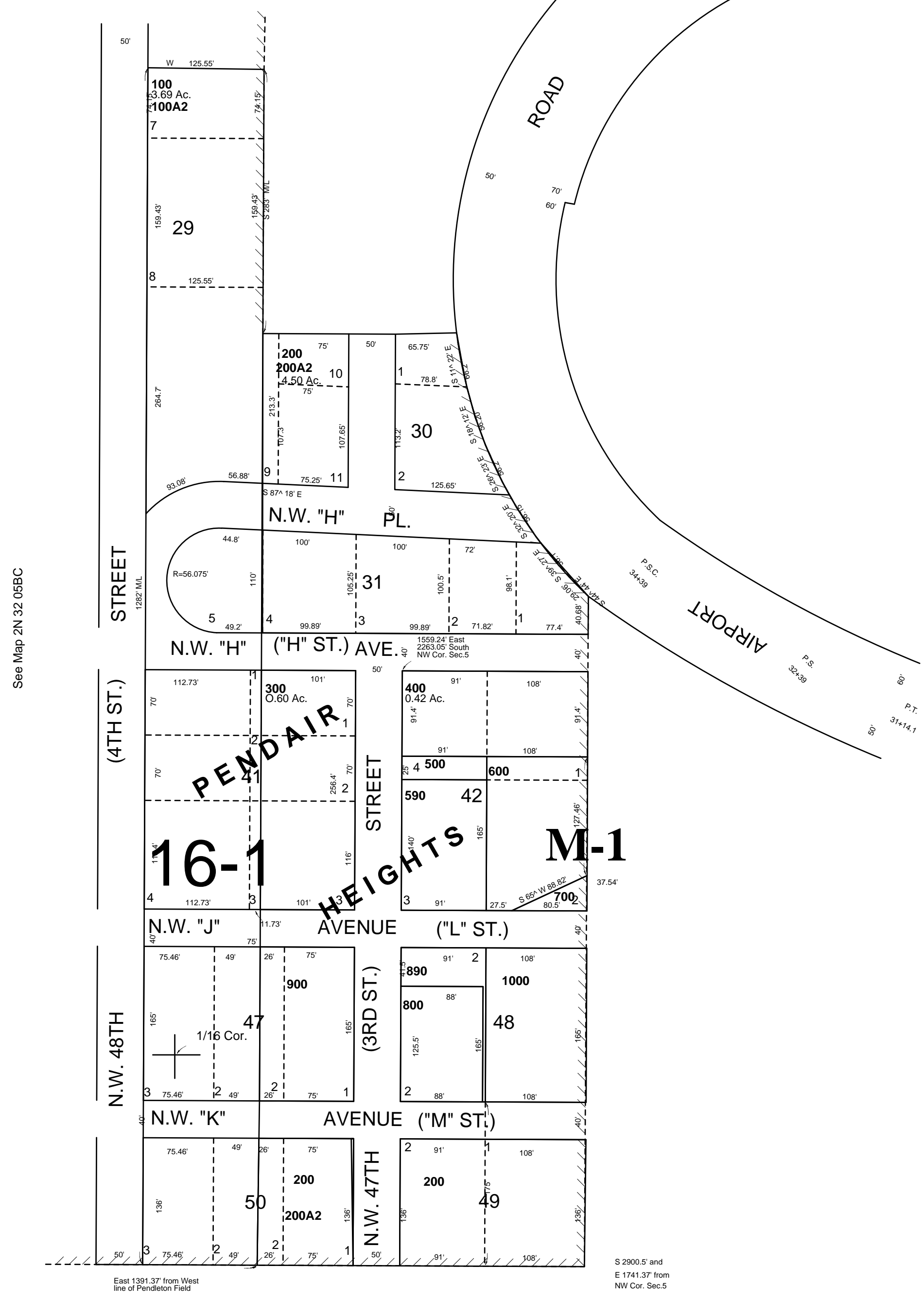
AERIAL PHOTO 4P-105



SCALE 1"=100"

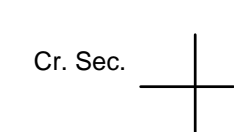
See Map 2N 32 05BA

PCS
39+39.6



See Map 2N 32 05BC

See Map 2N 32 05



East 1391.37 from West line of Pendleton Field
S 2900.5 and E 1741.37 from NW Cor. Sec. 5

2N3205BD