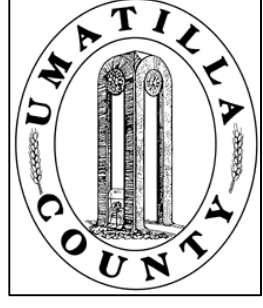


This map was prepared for Assessment & Taxation purposes only and was NOT prepared nor is it suitable for legal, engineering or surveying purposes.



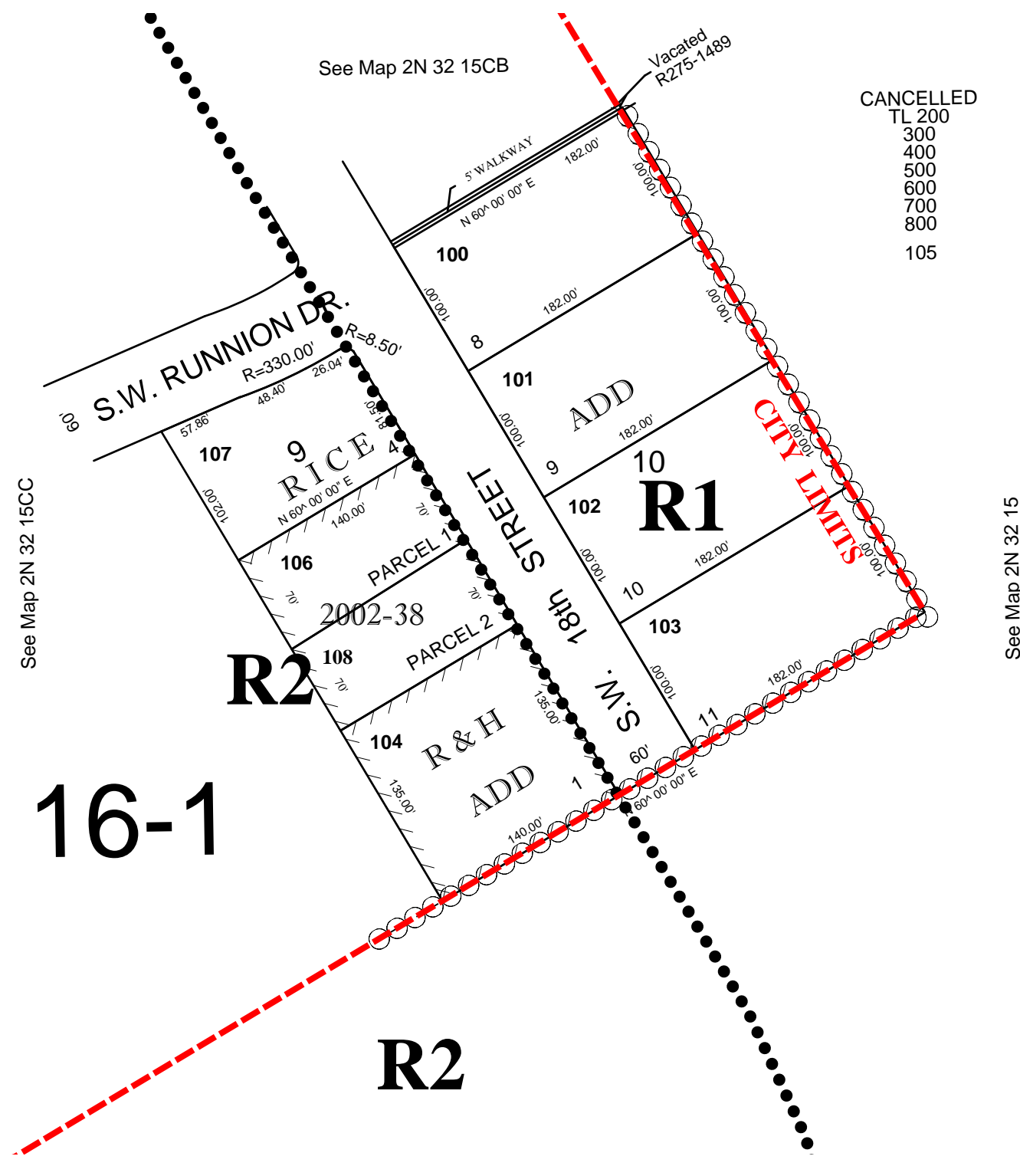
SE1/4 SW1/4 SEC 15 T2N R32E WM

UMATILLA COUNTY

SCALE: 1" = 100'

2N3215CD

PENDLETON CITY & UGB



R1

16-1

R2

2/12/03

2N3215CD