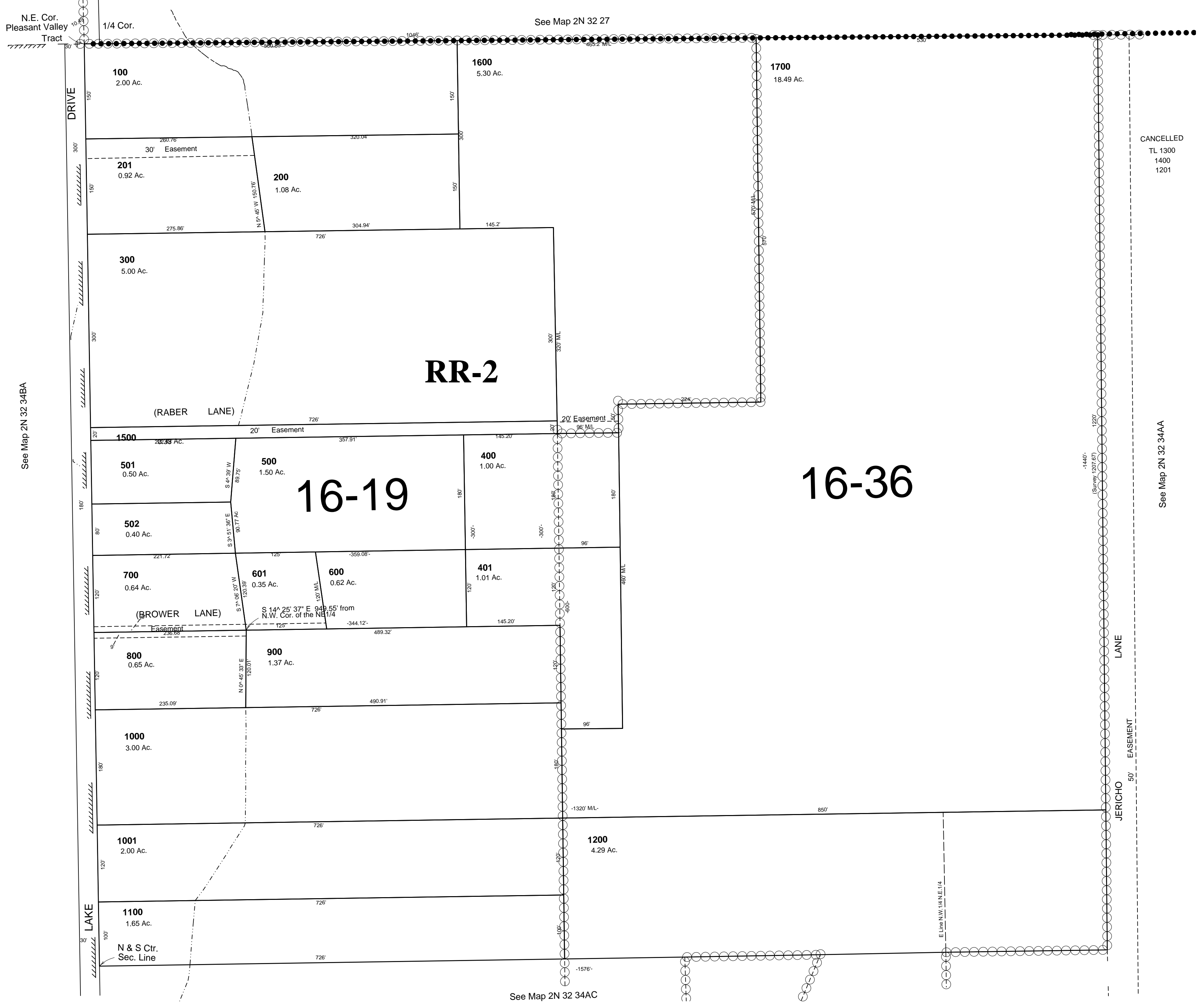


This map was prepared for assessment purposes

NW1/4 NE1/4 SEC 34 T2N R32E WM
UMATILLA COUNTY
SCALE 1"=100'

9/13/06

2N 32 34AB
AERIAL PHOTO NO. 4P-49 & 50



See Map 2N 32 34BA

See Map 2N 32 27

See Map 2N 32 34AC

CANCELLED
TL 1300
1400
1201

See Map 2N 32 34AA

2N 32 34AB