

This map was prepared for Assessment purposes only.

SE1/4 NW1/4 SEC 34 T2N R32E WM UMATILLA COUNTY, OR

9/13/06

2N 32 34BD

AERIAL PHOTO NO 4P-49 & 50

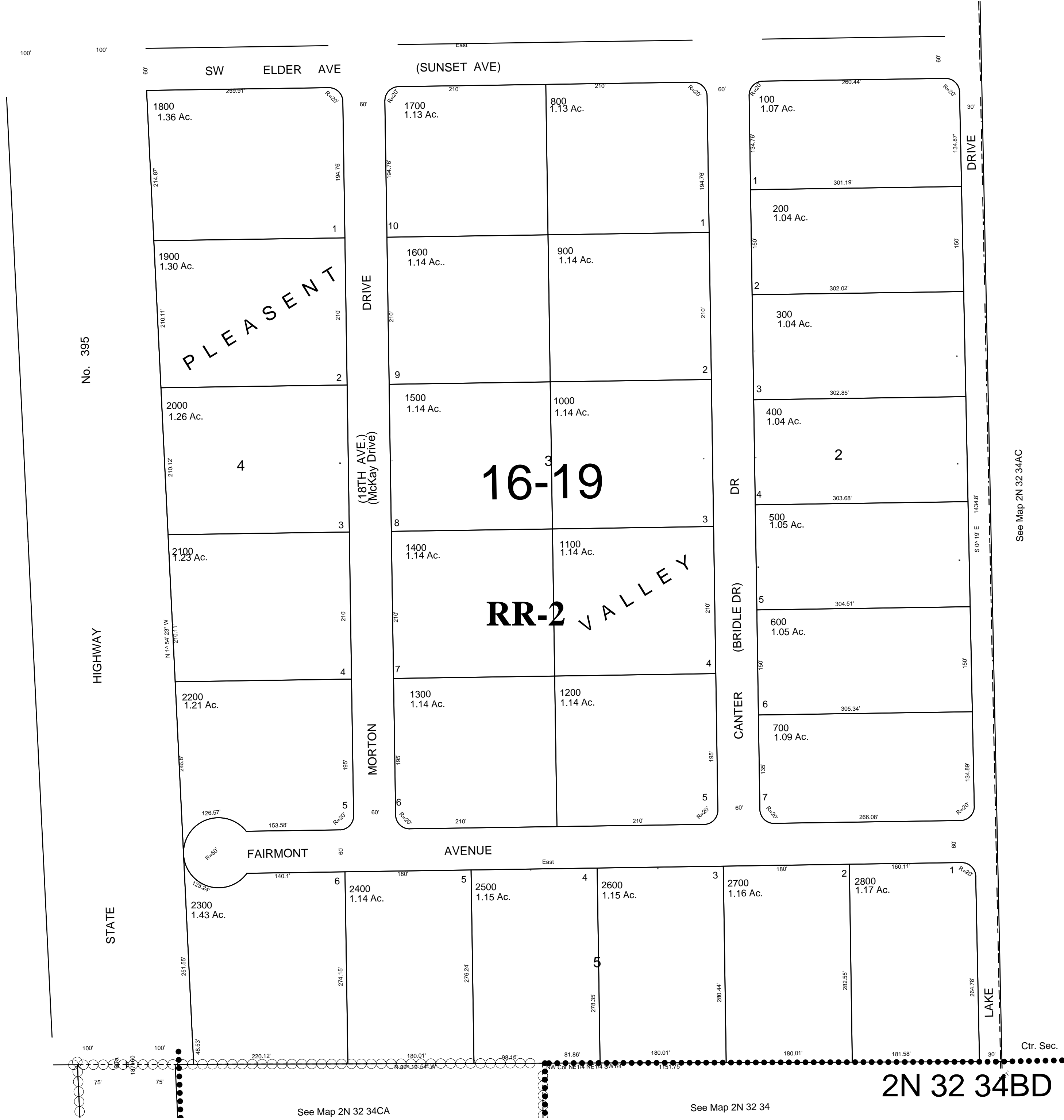
SCALE: 1" = 100'

See Map 2N 32 34BA

See FIRM for areas subject to flooding

See Map 2N 32 34

See Map 2N 32 34AC



See Map 2N 32 34CA

See Map 2N 32 34

2N 32 34BD