

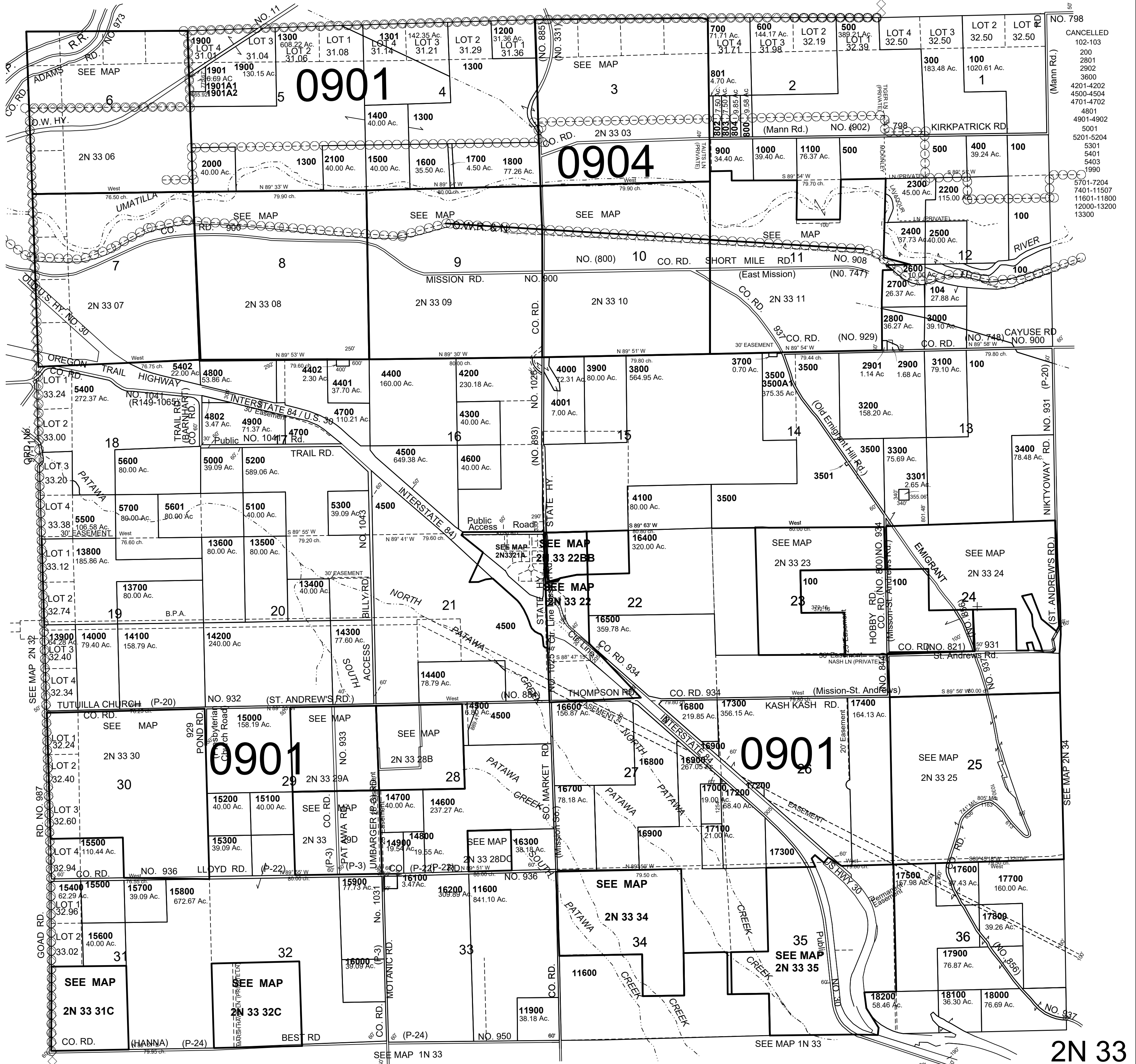
This map was prepared for Assessment & Taxation purposes only and was NOT prepared nor is it suitable for legal, engineering or surveying purposes.

T2N R33E WM UMATILLA COUNTY SCALE 1"=2000'

Revised: 03/05/21

2N 33

AERIAL PHOTO NO. NZ 4P 43-47, 62-66 & 97-100
RESERVATION



2N 33