

This map was prepared for assessment purposes

SE1/4 SW1/4 SEC 6 T2N R33E WM
UMATILLA COUNTY
SCALE 1"=100'

10/26/06

2N 33 06CD

AERIAL PHOTO NO 4P-101

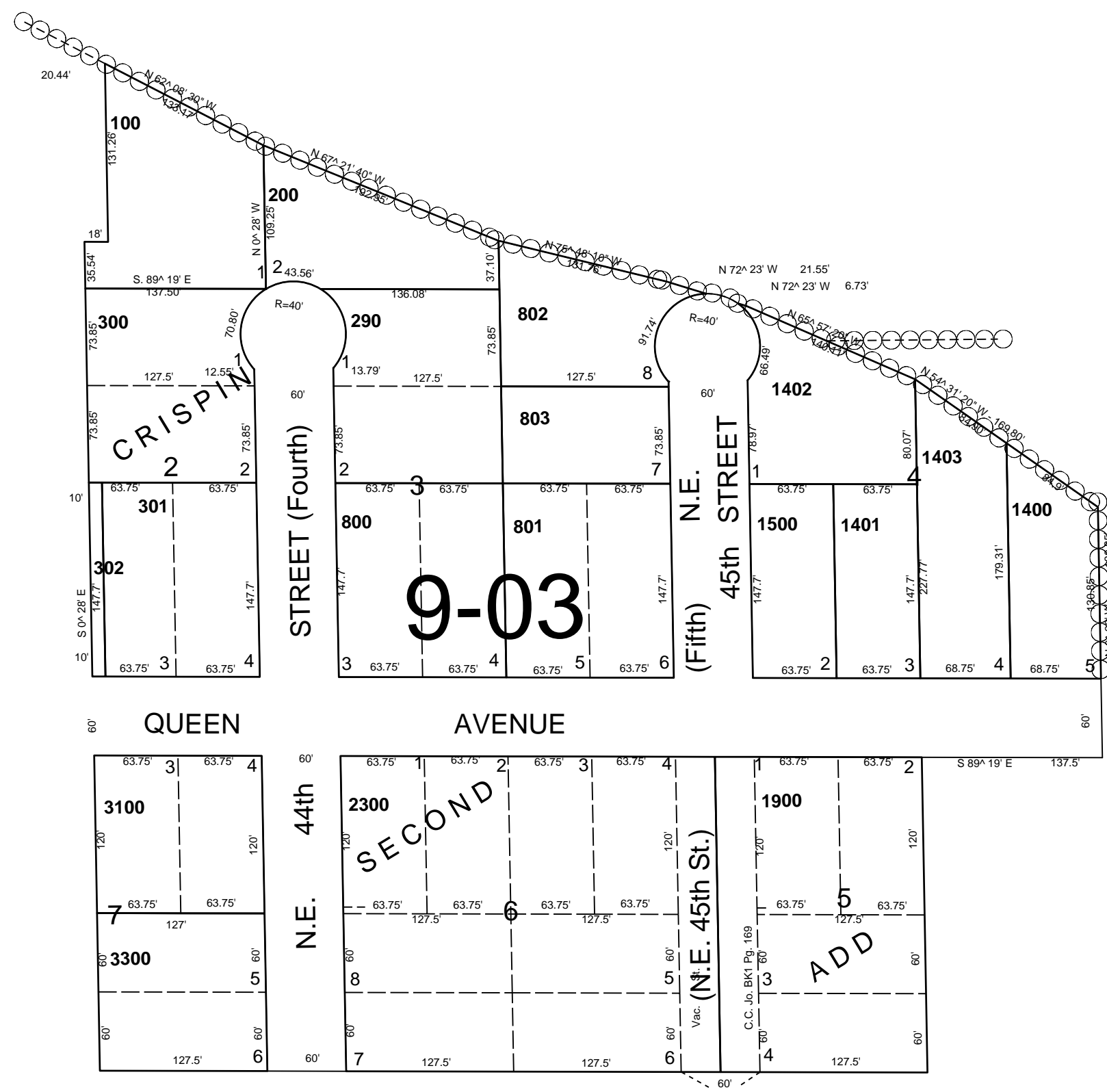
RESERVATION

See Map 2N 33 06

See Map 2N 33 06CC

See Map 2N 3306

1/16 Cor.



See Map 2N 33 07

2N 33 06CD