

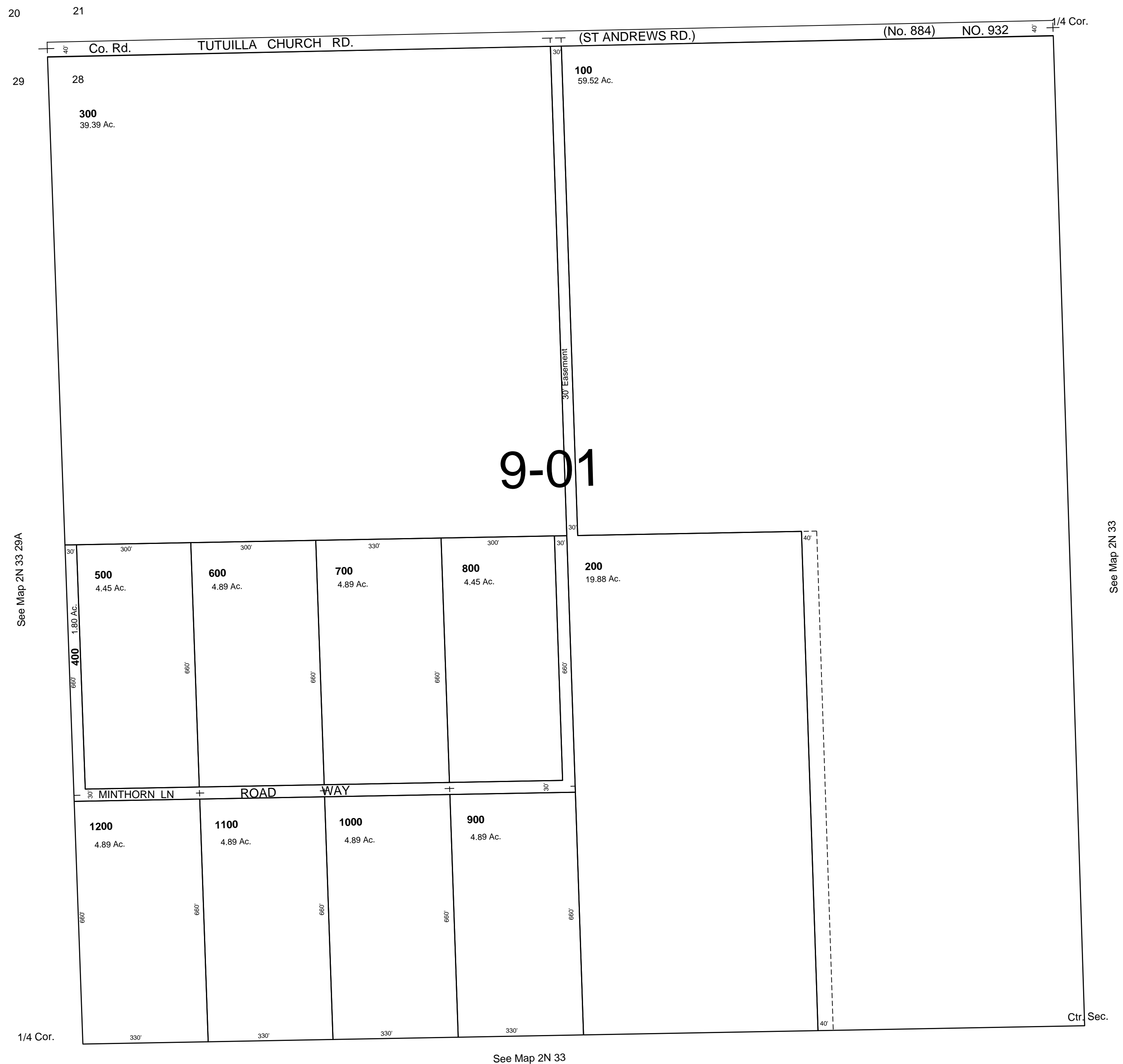
This map was prepared for Assessment and Taxation purposes only and has NOT been prepared for legal, engineering or surveying purposes.

NW1/4 SEC 28 T2N R33E WM
UMATILLA COUNTY
SCALE 1"=200'

10/28/06

2N 33 28B
AERIAL PHOTO NO 4P-45
RESERVATION

See Map 2N 33



2N 33 28B