

This map was prepared for Assessment & Taxation purposes only and was NOT prepared nor is it suitable for legal, engineering or surveying purposes.

SW1/4 T2N R33E WM UMATILLA COUNTY

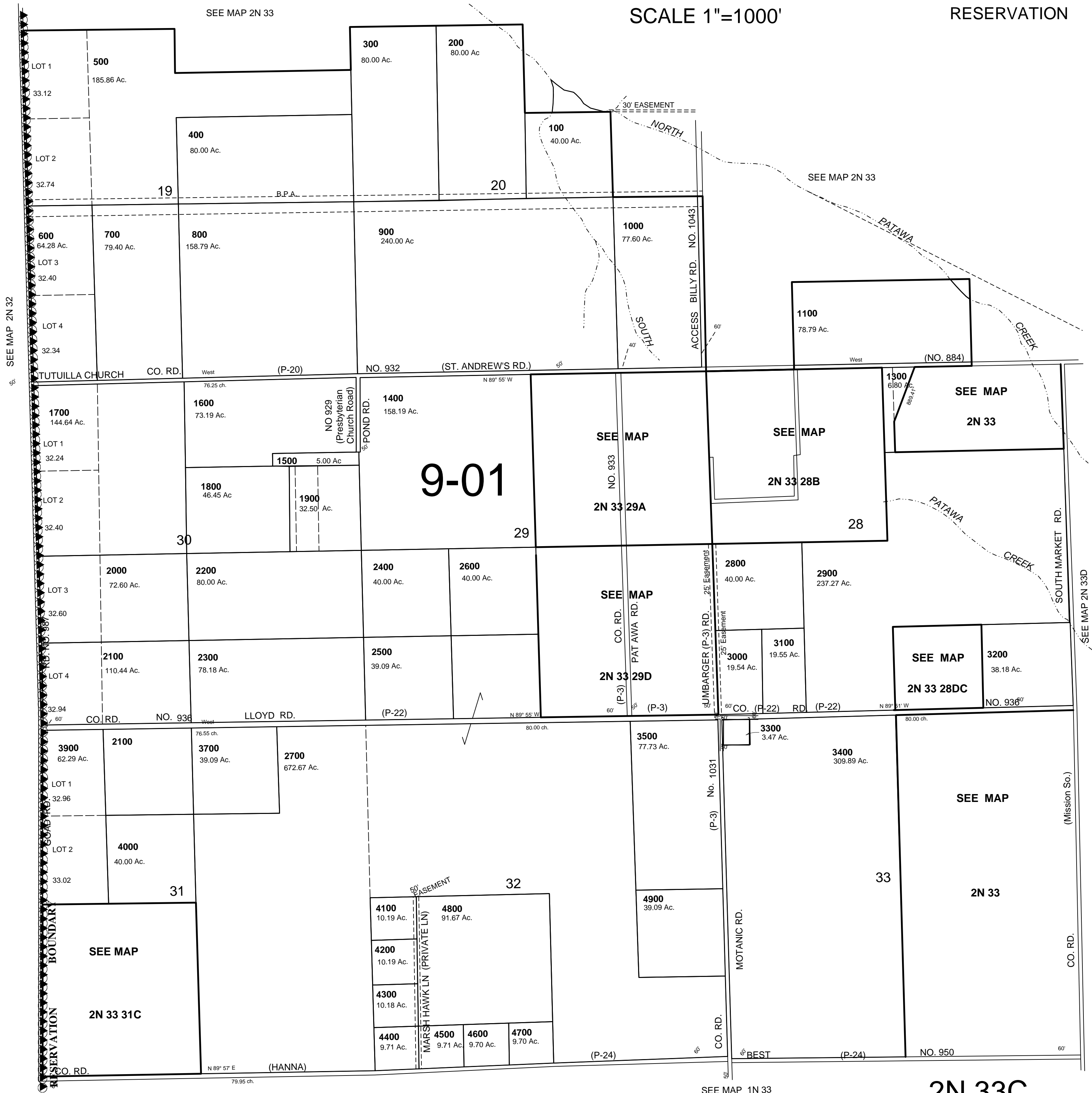
3/7/08

2N 33C

AERIAL PHOTO NO. 4P 43-47, 62-66 & 97-100

RESERVATION

SCALE 1"=1000'



SEE MAP 1N 33

2N 33C