

This map was prepared for Assessment & Taxation purposes only and was NOT prepared nor is it suitable for legal, engineering or surveying purposes.

NE1/4 SE1/4 SEC 16 T3N R29E WM UMATILLA COUNTY

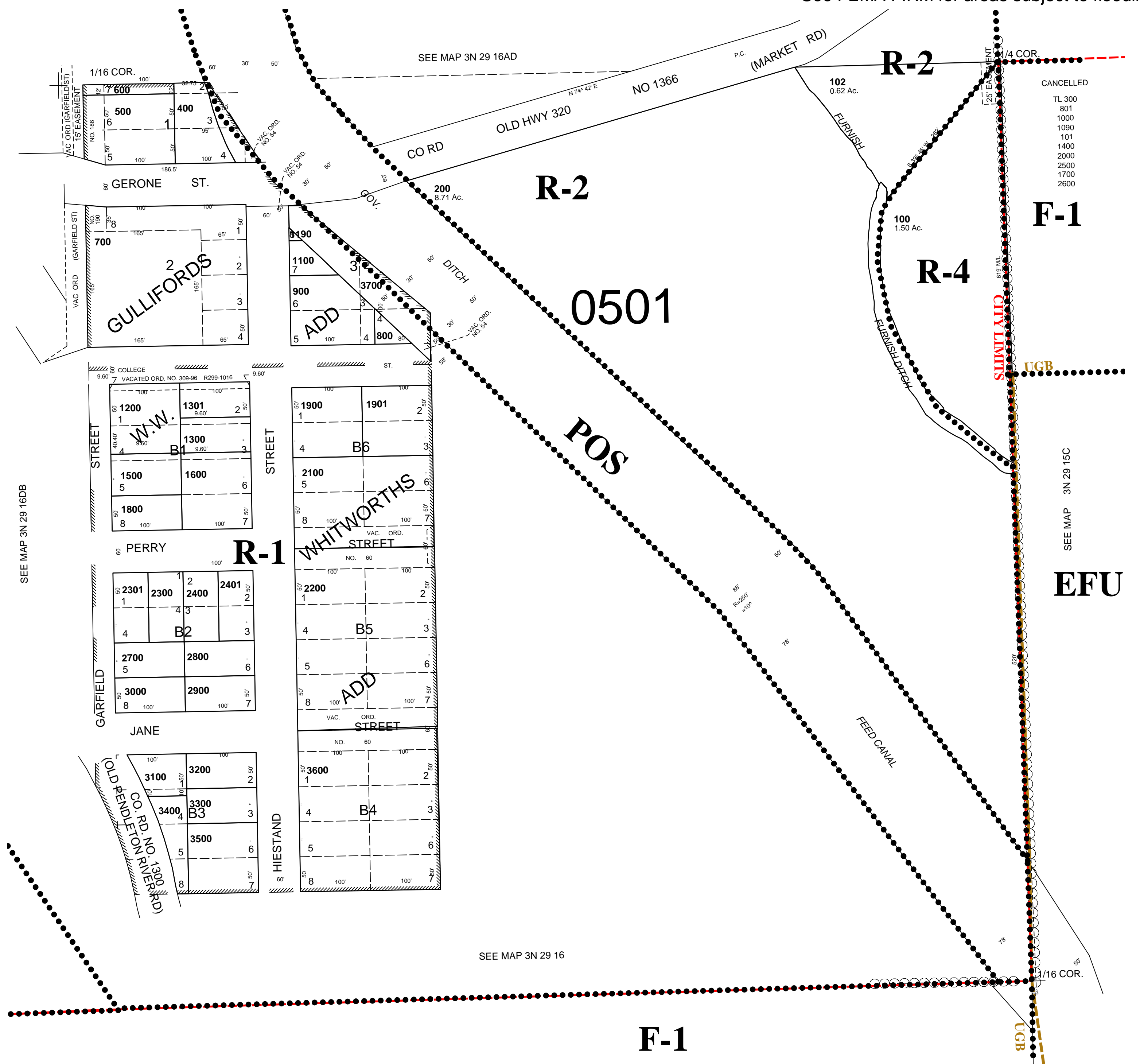
06/03/2019

3N 29 16DA

AERIAL PHOTO NO. NZ 2P-111

CITY OF ECHO

See FEMA FIRM for areas subject to flooding



- CANCELLED
- TL 300
- 301
- 1000
- 1080
- 101
- 1400
- 2000
- 2500
- 1700
- 2800

SEE MAP 3N 29 15C

3N 29 16DA