

This map was prepared for assessment purposes

NE1/4 SE1/4 SEC 4 T3NR34E WM UMATILLA COUNTY

03-04-2019

3N 34 04DA

AERIAL PHOTO NO. 5P-169

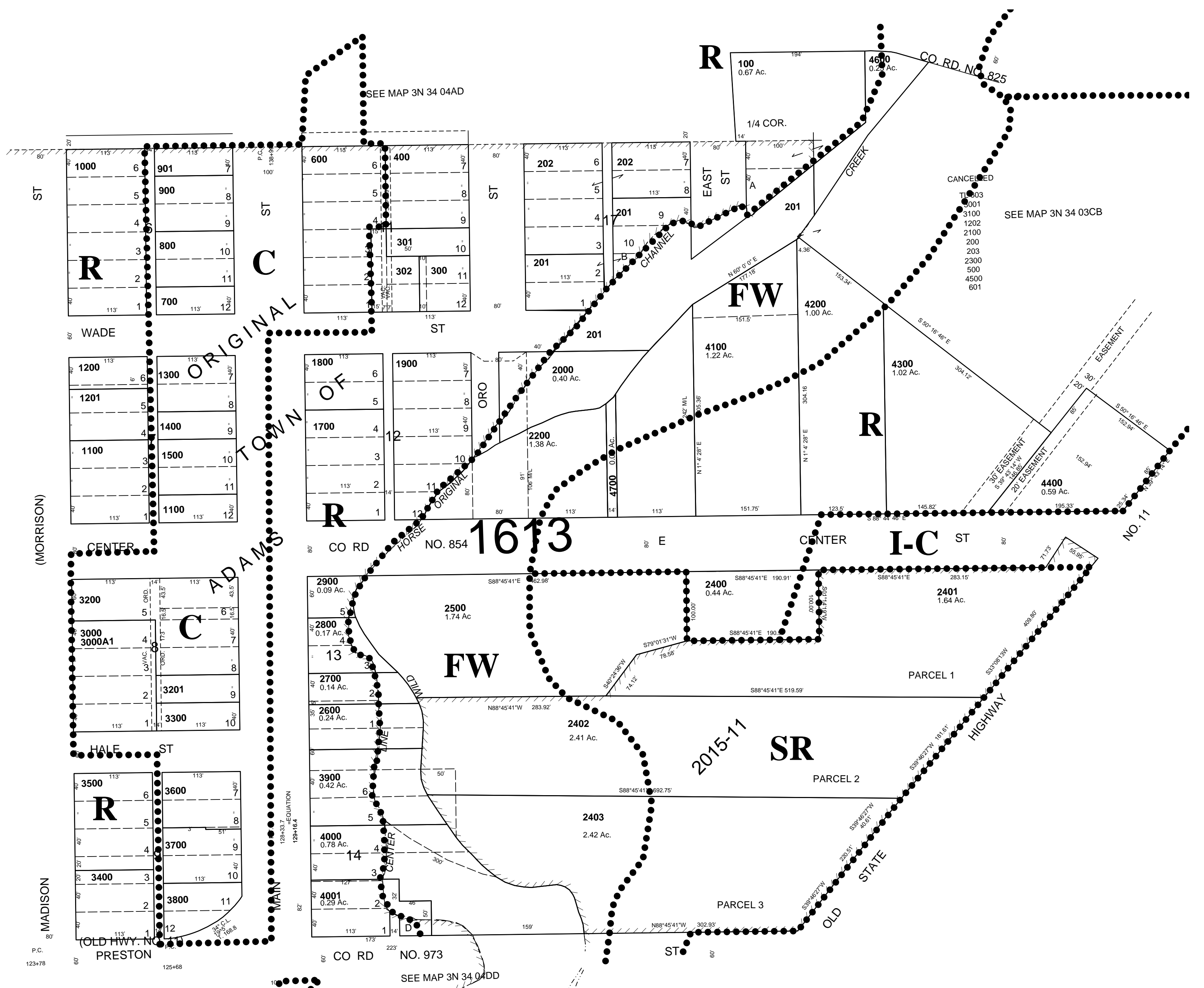
City of Adams

See FIRM for areas subject to flooding

SCALE 1"=100'

1/16 COR.

SEE MAP 3N 34 04DB



3N 34 04DA