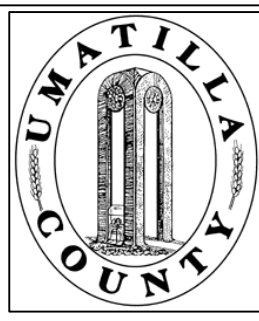


This map was prepared for Assessment purposes only.



# NW 1/4 SW 1/4 SEC 2 T4N R28E WM UMATILLA COUNTY, OR

7/8/04

## 4N2802CB

HERMISTON CITY & UGA

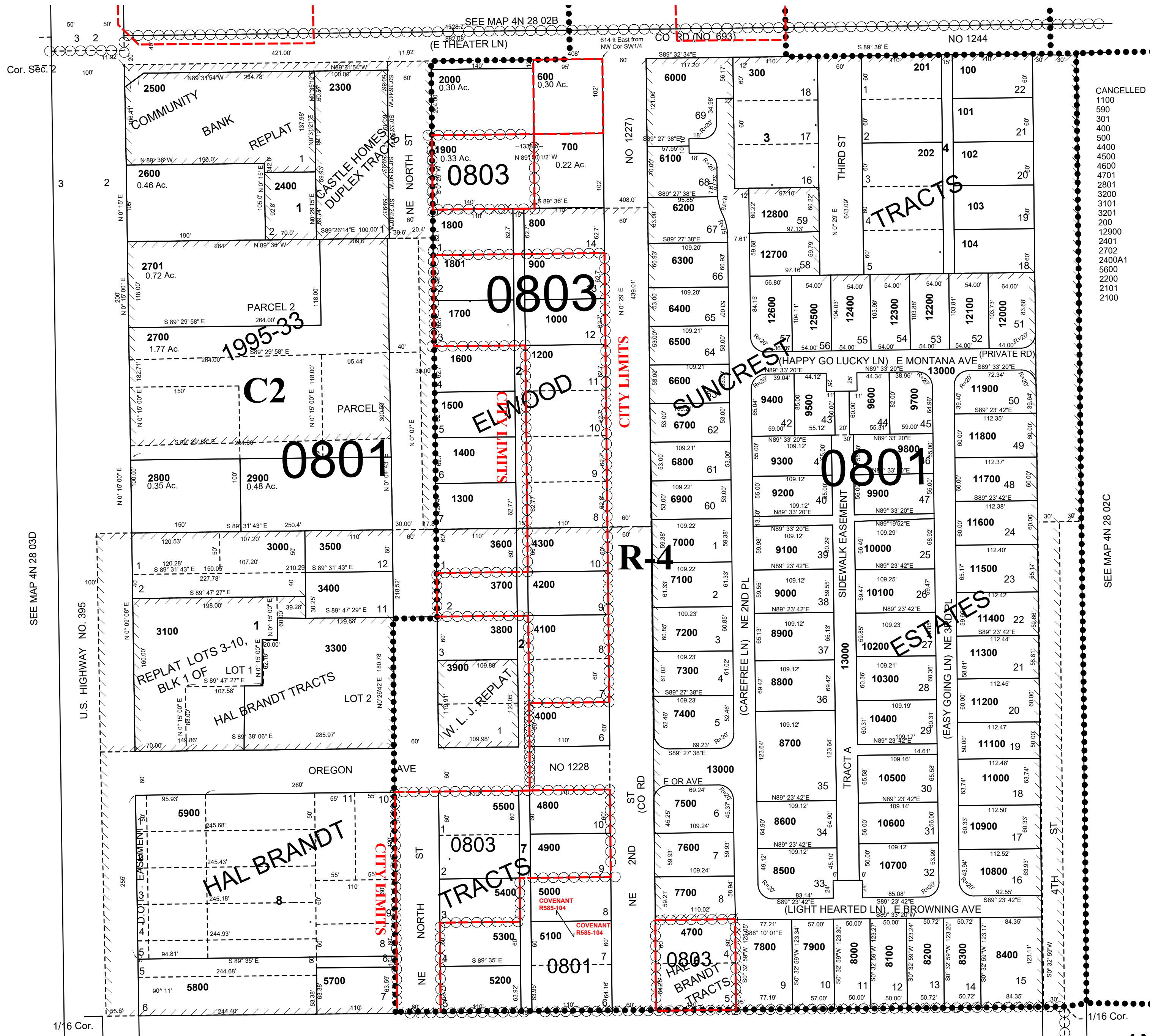
ELWOOD TRACTS  
HAL BRANDT TRACTS  
Aerial Photo No NZ-1P-122

REPLAT OF BLK 3, LTS 1-15 &  
BLK 4, LTS 6-17 OF ELWOOD TRACTS  
ALL OF BLK 3, BLK4, BLK5 & BLK6,  
LTS 1-3 & 6-10 OF HAL BRANDT TRACTS

REPLAT OF LTS 3-10, BLK 1  
OF HAL BRANDT TRACTS

SUNCREST ESTATES

SCALE: 1" = 100'



SEE MAP 4N 28 03D

SEE MAP 4N 28 02C

SEE MAP 4N 28 02C

## 4N2802CB