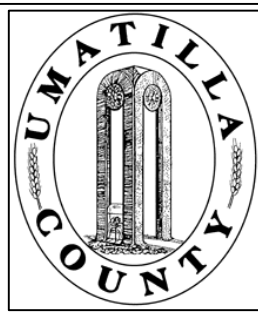
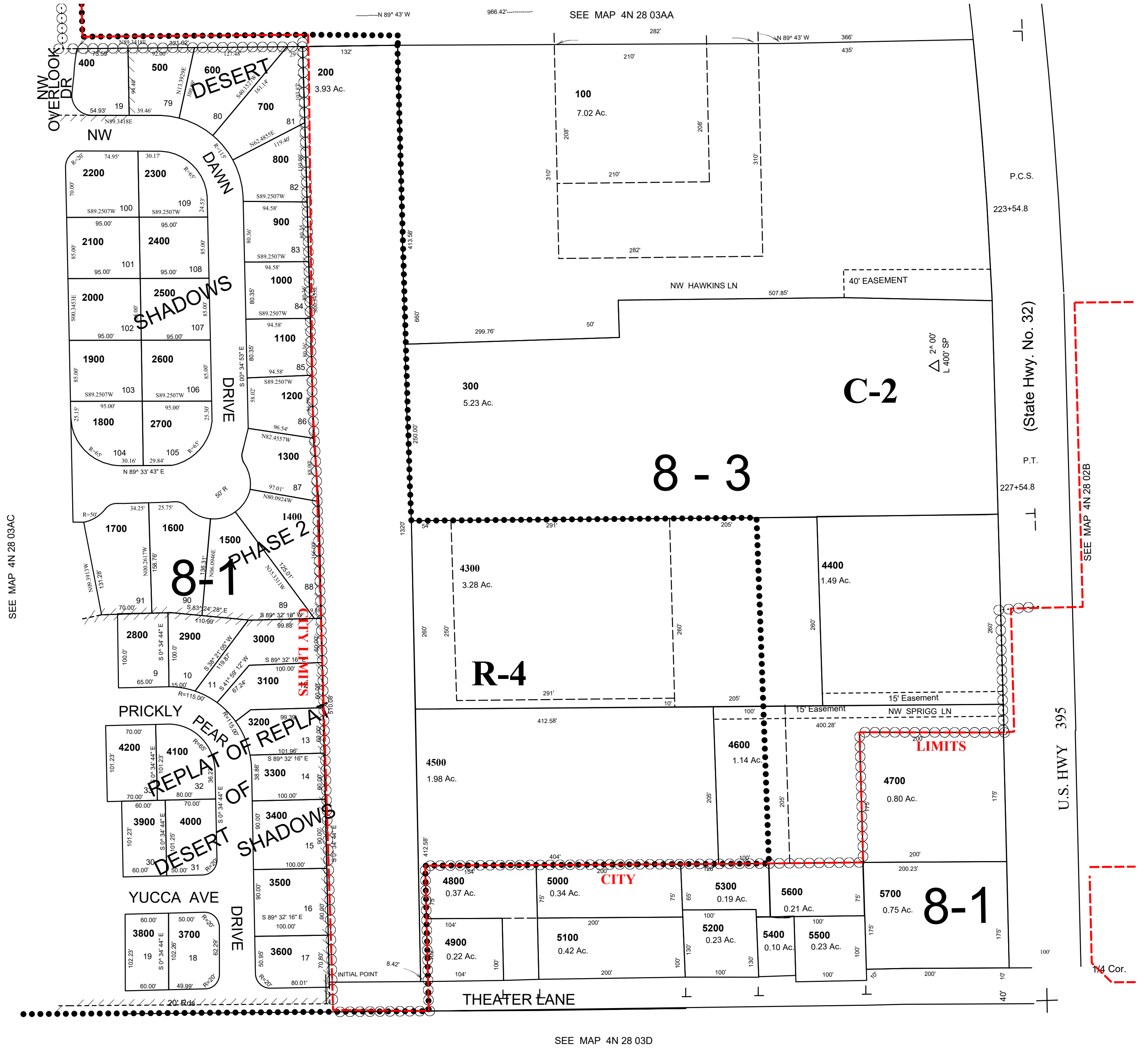


This map was prepared for Assessment purposes only.



SE1/4 NE1/4 SEC 3 T4N R28E WM
UMATILLA COUNTY, OR
SCALE: 1" = 100'

4N2803AD
HERMISTON CITY & UGA



SEE MAP 4N 28 03AC

SEE MAP 4N 28 03AA

SEE MAP 4N 28 03D

4N2803AD