

This map was prepared for Assessment & Taxation purposes only and was NOT prepared nor is it suitable for legal, engineering or surveying purposes.

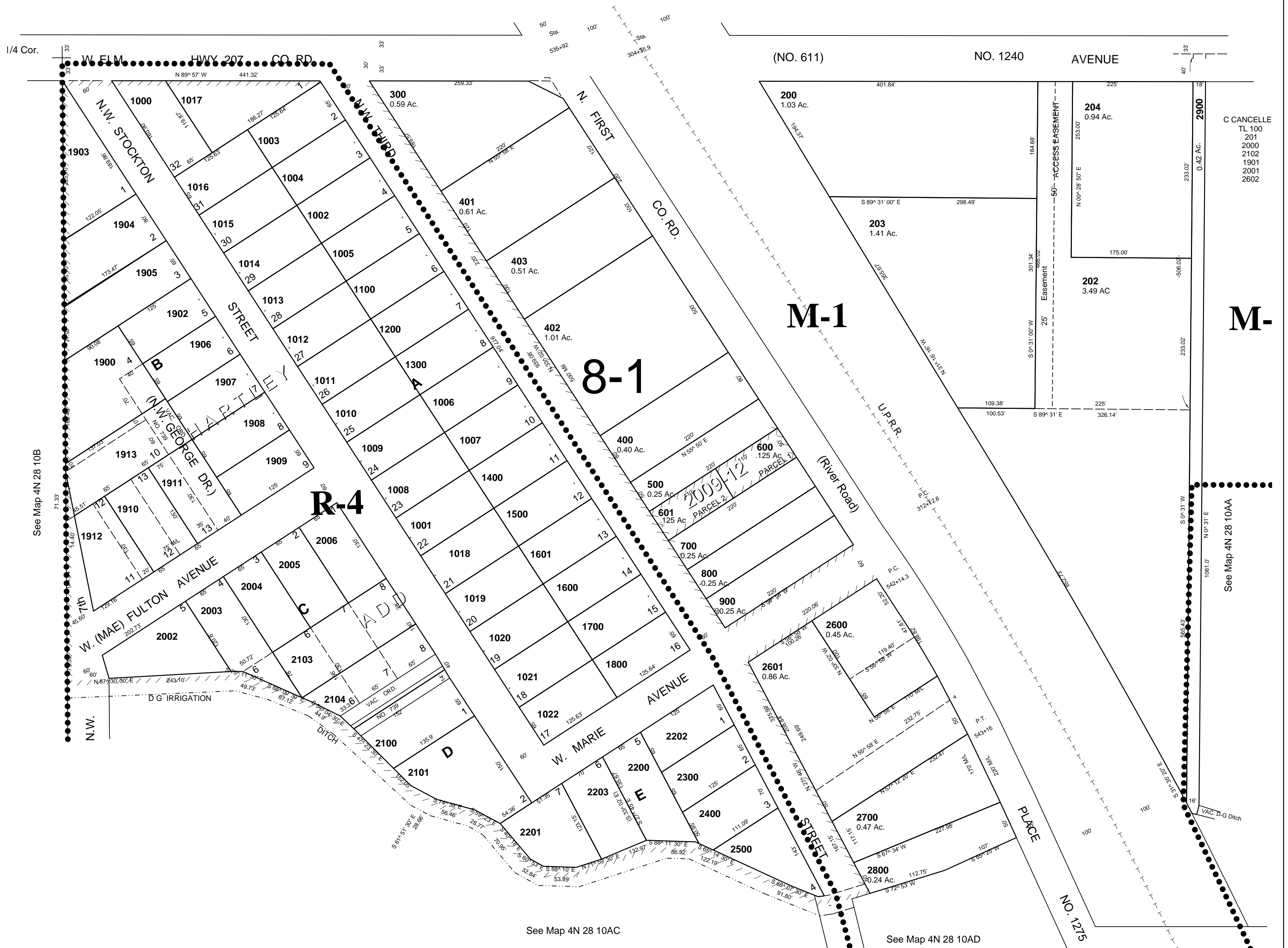
NW1/4 NE1/4 SEC 10 T4N R28E WM UMATILLA COUNTY

4N 28 10AB

AERIAL PHOTO NO. NZ 1P-123
CITY OF HERMISTON

SCALE 1"=100'

See Map 4N 28 03D



See Map 4N 28 10B

See Map 4N 28 10AC

See Map 4N 28 10AD

See Map 4N 28 10AA

Revised 4/29/09

4N 28 10AB