

This map was prepared for assessment purposes

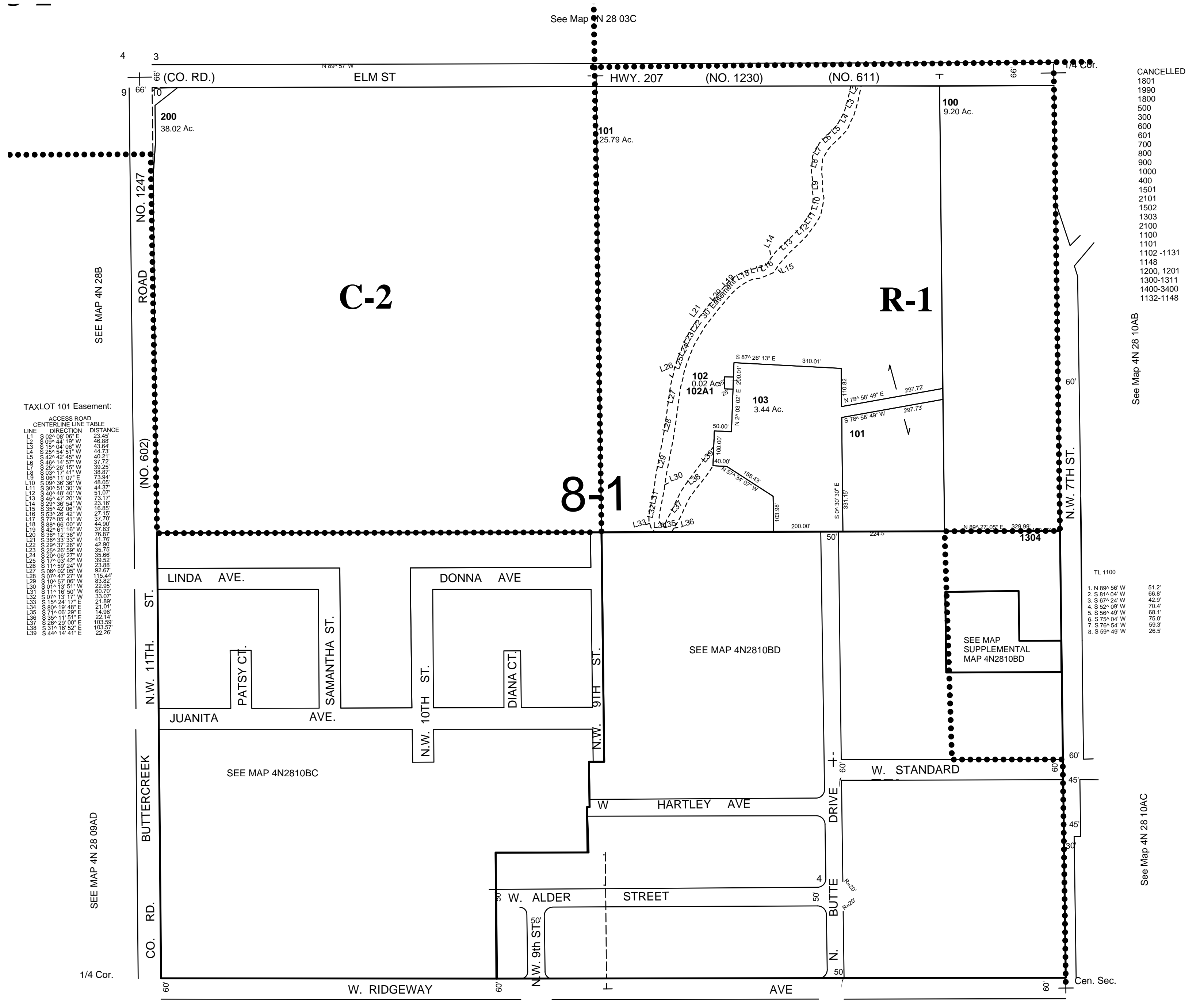
NW1/4 SEC 10 T4N R28E WM UMATILLA COUNTY

12-16-05

4N 28 10B

AERIAL PHOTO NO. NZ-1P 121
CITY OF HERMSITON

1"=200'



See Map 4N 28 10 CB

See Map 4N 28 10CA

4N 28 10B

- CANCELLED
- 1801
 - 1800
 - 1800
 - 500
 - 300
 - 600
 - 601
 - 700
 - 800
 - 900
 - 1000
 - 1100
 - 1200
 - 1300
 - 1303
 - 1303
 - 2100
 - 1100
 - 1101
 - 1102 - 1131
 - 1148
 - 1200, 1201
 - 1300-1311
 - 1400-1400
 - 1132-1148

See Map 4N 28 10AB

See Map 4N 28 10AC