

This map was prepared for Assessment & Taxation purposes only and was NOT prepared nor is it suitable for legal, engineering or surveying purposes.

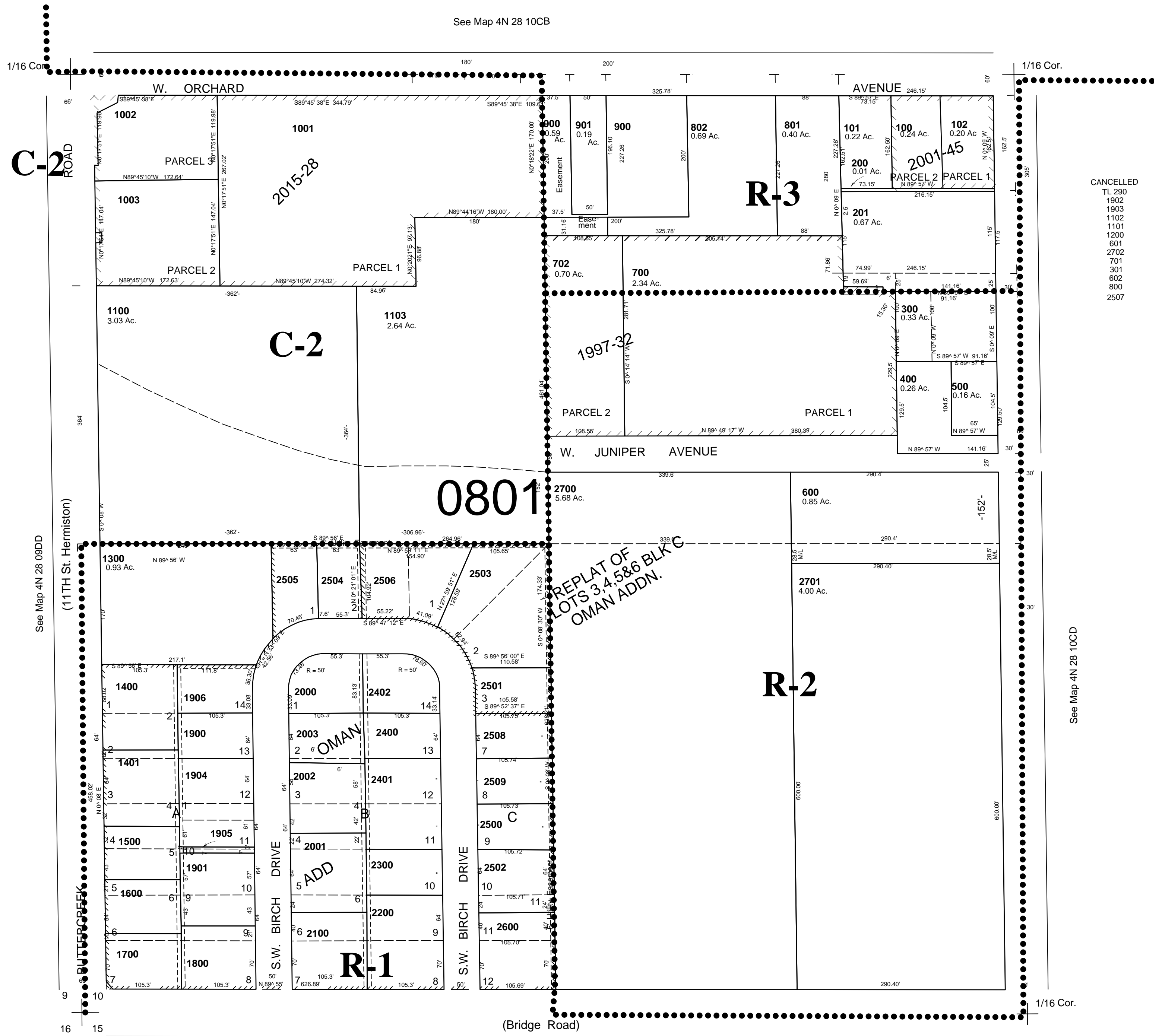
# SW1/4 SW1/4 SEC 10 T4N R28E WM UMATILLA COUNTY

4/3/06

4N 28 10CC  
AERIAL PHOTO NO. 1P-122  
CITY OF HERMISTON

SCALE 1"=100'

See Map 4N 28 10CB



CANCELLED  
TL 290  
1902  
1903  
1102  
1101  
1200  
601  
2702  
701  
301  
802  
800  
2507

See Map 4N 28 10CD

See Map 4N 28 15BB

4N 28 10CC