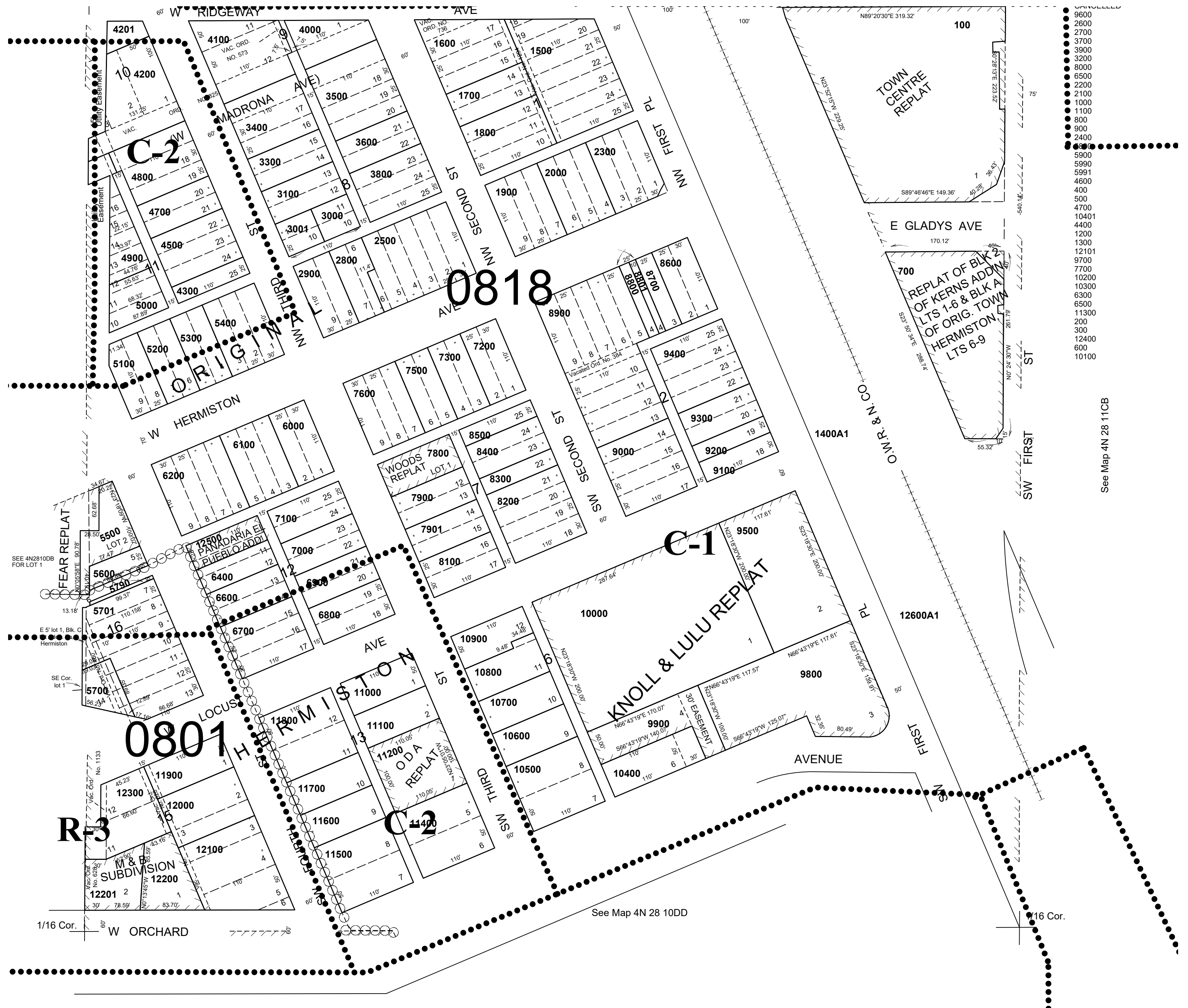


This map was prepared for Assessment & Taxation purposes only and was NOT prepared nor is it suitable for legal, engineering or surveying purposes.

NE1/4 SE1/4 SEC 10 T4N R28E WM
UMATILLA COUNTY
SCALE 1"=100'

4N 28 10DA
AERIAL PHOTO NO NZ IP-121
CITY OF HERMISTON



REVISED: 5/04/21

4N 28 10DA