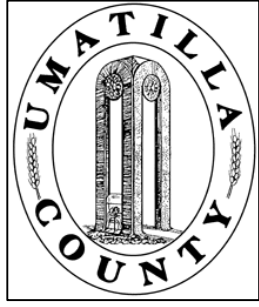


This map was prepared for Assessment purposes only.



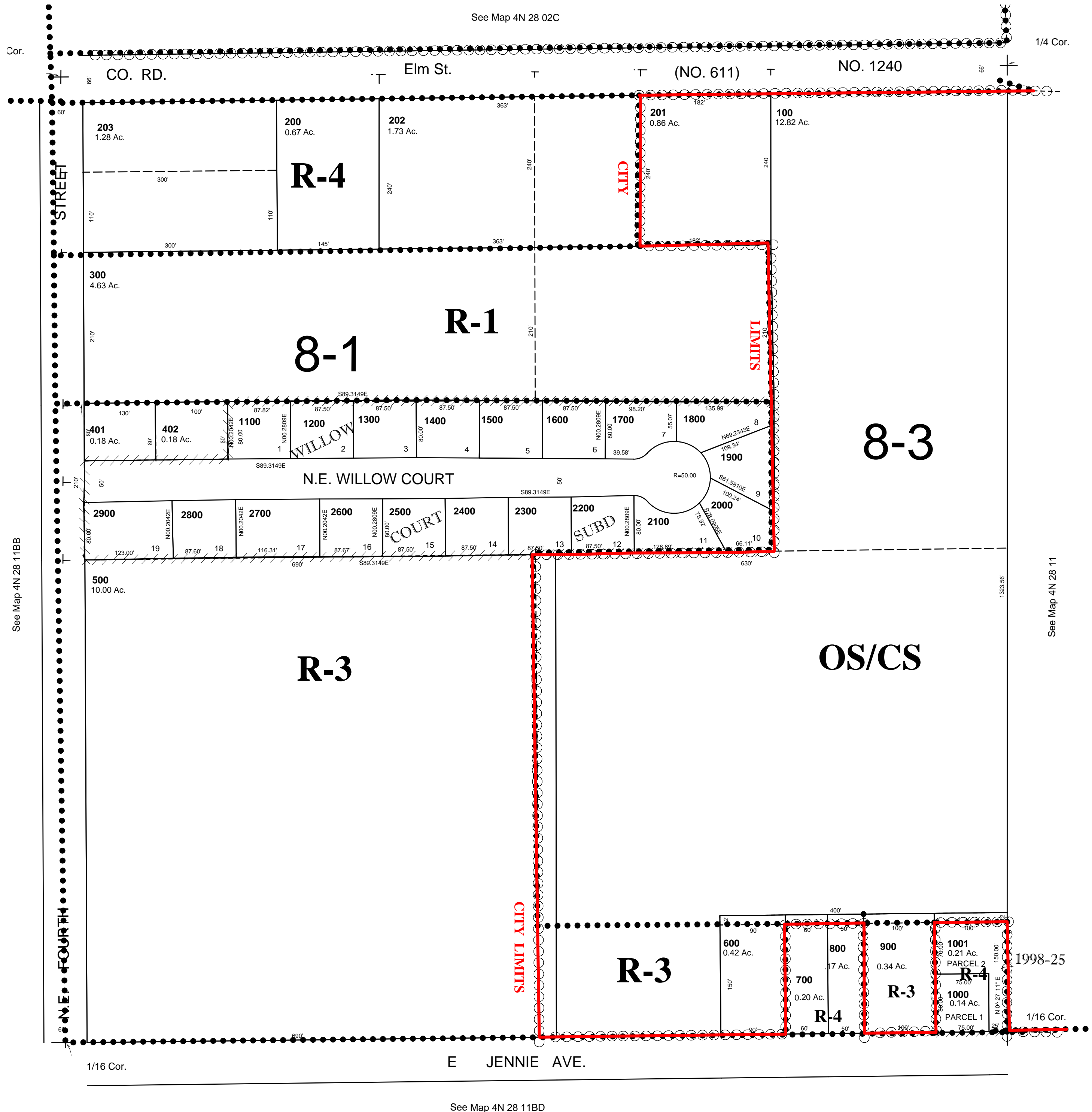
# NE1/4 NW1/4 SEC 11 T4N R28E WM UMATILLA COUNTY, OR

SCALE: 1" = 100'

## 4N2811BA

HERMISTON CITY & UGA  
ALL IN STAGE GULCH CGWATER AREA

ALL IN HERMISTON AIRPORT HAZARD OVERLAY ZONE



See Map 4N 28 11BB

See Map 4N 28 11

See Map 4N 28 11BD

## 4N2811BA