

This map was prepared for Assessment & Taxation purposes only and has not been prepared or is it suitable for legal, engineering or surveying purposes.

SE1/4 NW1/4 SEC 11 T4 NR28 E WM

4N2811BD

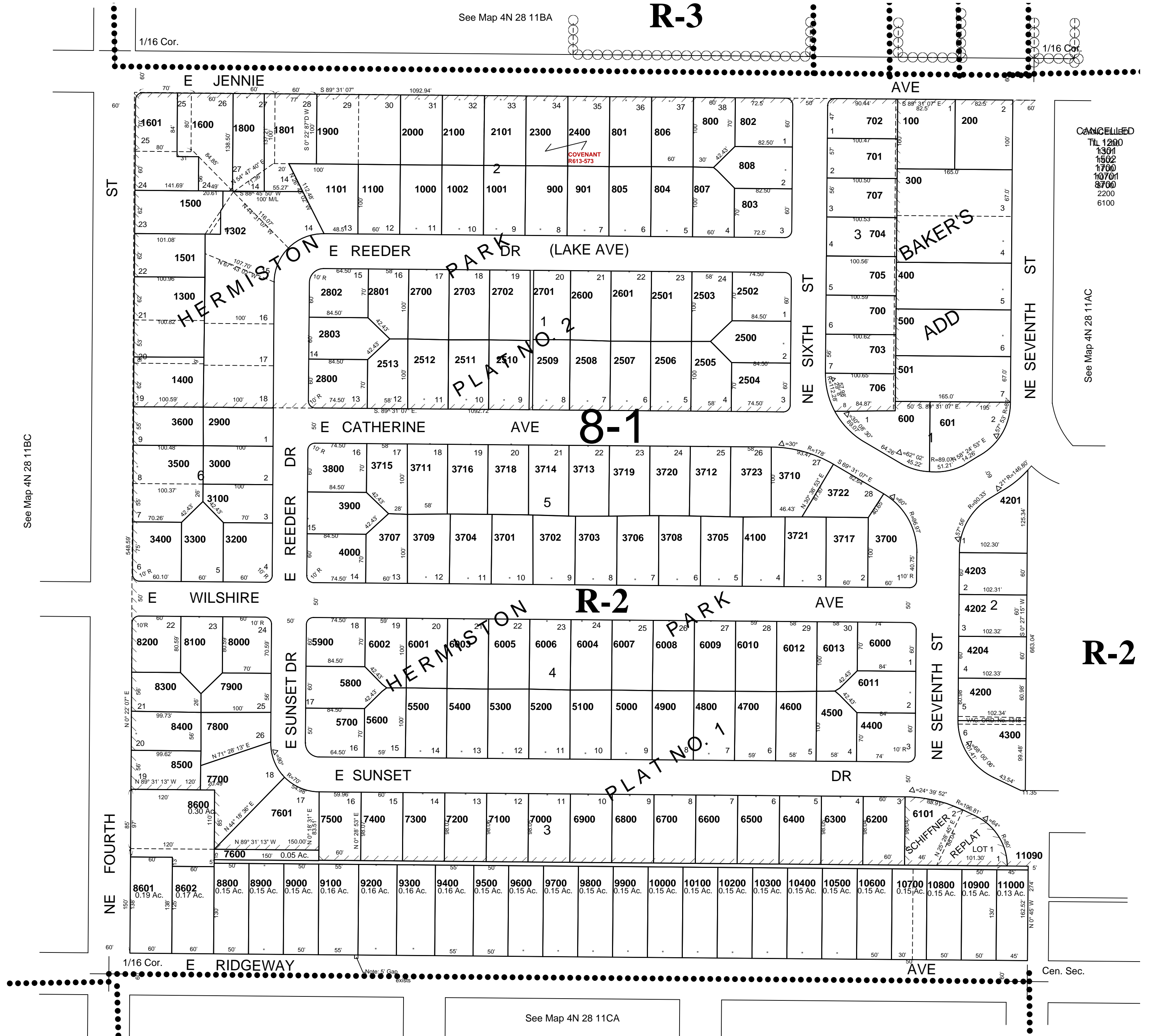
UMATILLA COUNTY

Revised: 1/2/08

AERIAL PHOTO NO NZ 1P-123

SCALE 1"=100'

CITY OF HERMISTON



CANCELLED  
 TL 1280  
 1301  
 1502  
 1700  
 10701  
 8700  
 2200  
 6100

See Map 4N 28 11AC

See Map 4N 28 11BC

See Map 4N 28 11CA

4N2811BD