

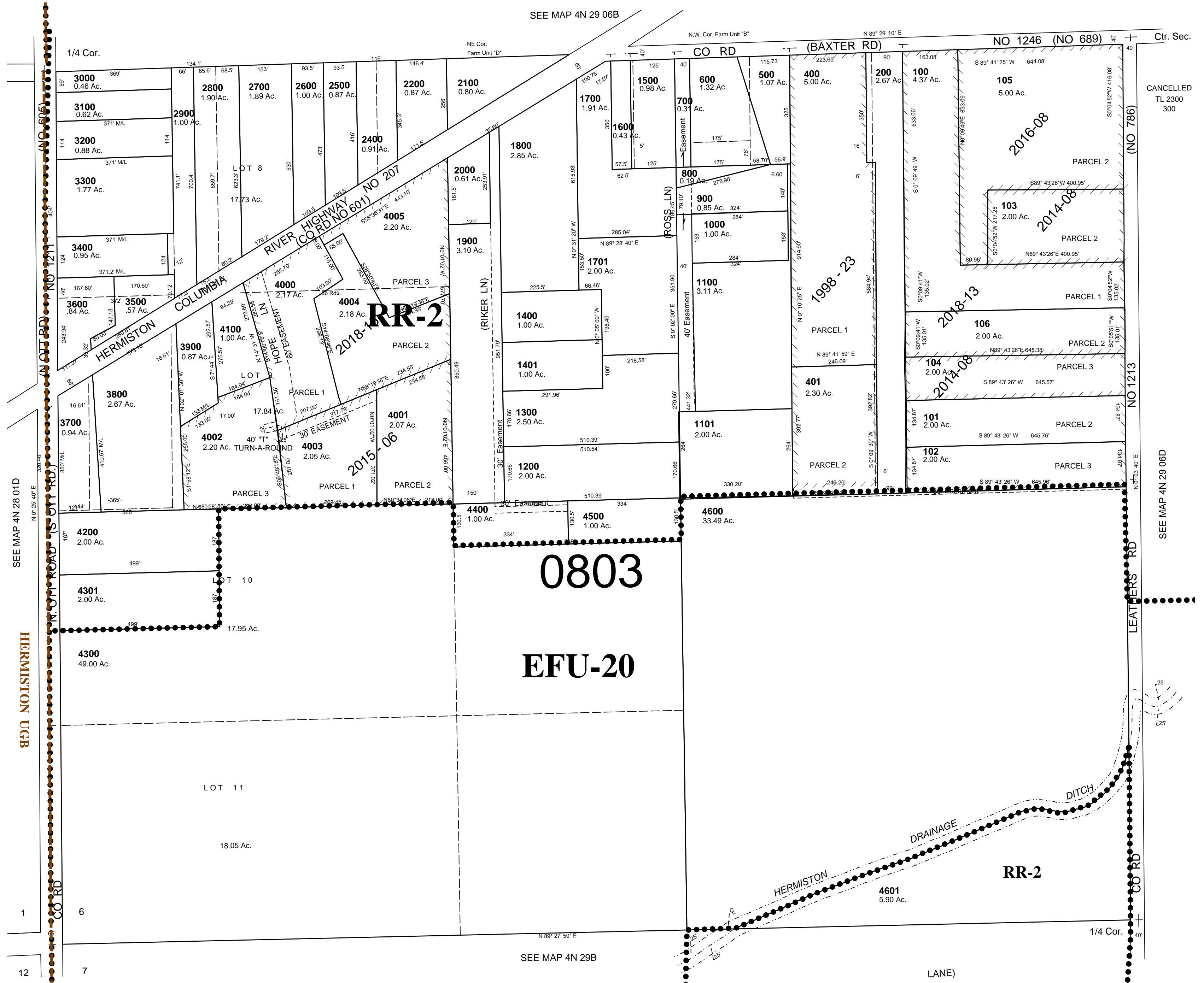
This map was prepared for Assessment & Taxation purposes only and has not been prepared for legal, engineering or surveying purposes.

SW1/4 SEC 6 T4N R29E WM
UMATILLA COUNTY
SCALE 1"=200'

02/06/19

4N 29 06C

AERIAL PHOTO NO, 1P 124 & 125



4N 29 06C