

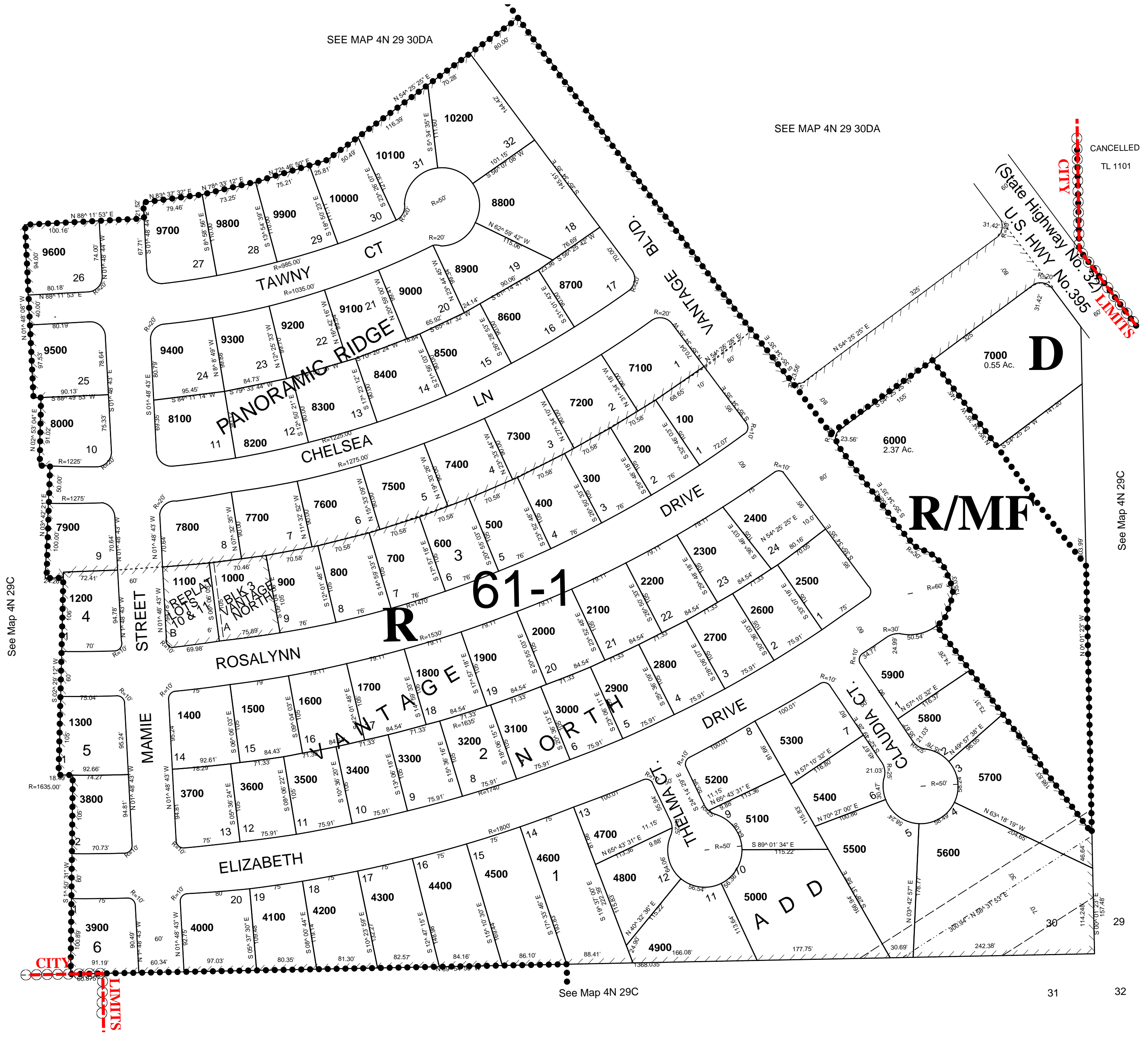
This map was prepared for Assessment & Taxation purposes only and was NOT prepared nor is it suitable for legal, engineering or surveying purposes.

SE 1/4 SE 1/4 SEC 30 T4N R29E WM UMATILLA COUNTY

REVISED: 8-20-08

4N 29 30DD
AERIAL PHOTO NO 2P-45
CITY OF STANFIELD

SCALE 1"=100'



4N 29 30DD