

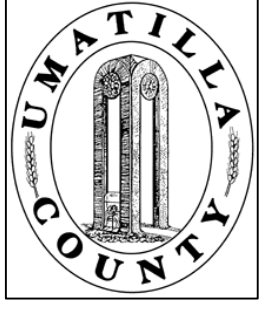
This map was prepared for Assessment purposes only.

SE1/4 NW1/4 SEC 32 T4N R29E WM

6/21/04

4N2932BD

DIXSON HEIGHTS
Aerial Photo No. 5P-45 & 46
CITY OF STANFIELD



UMATILLA COUNTY, OR

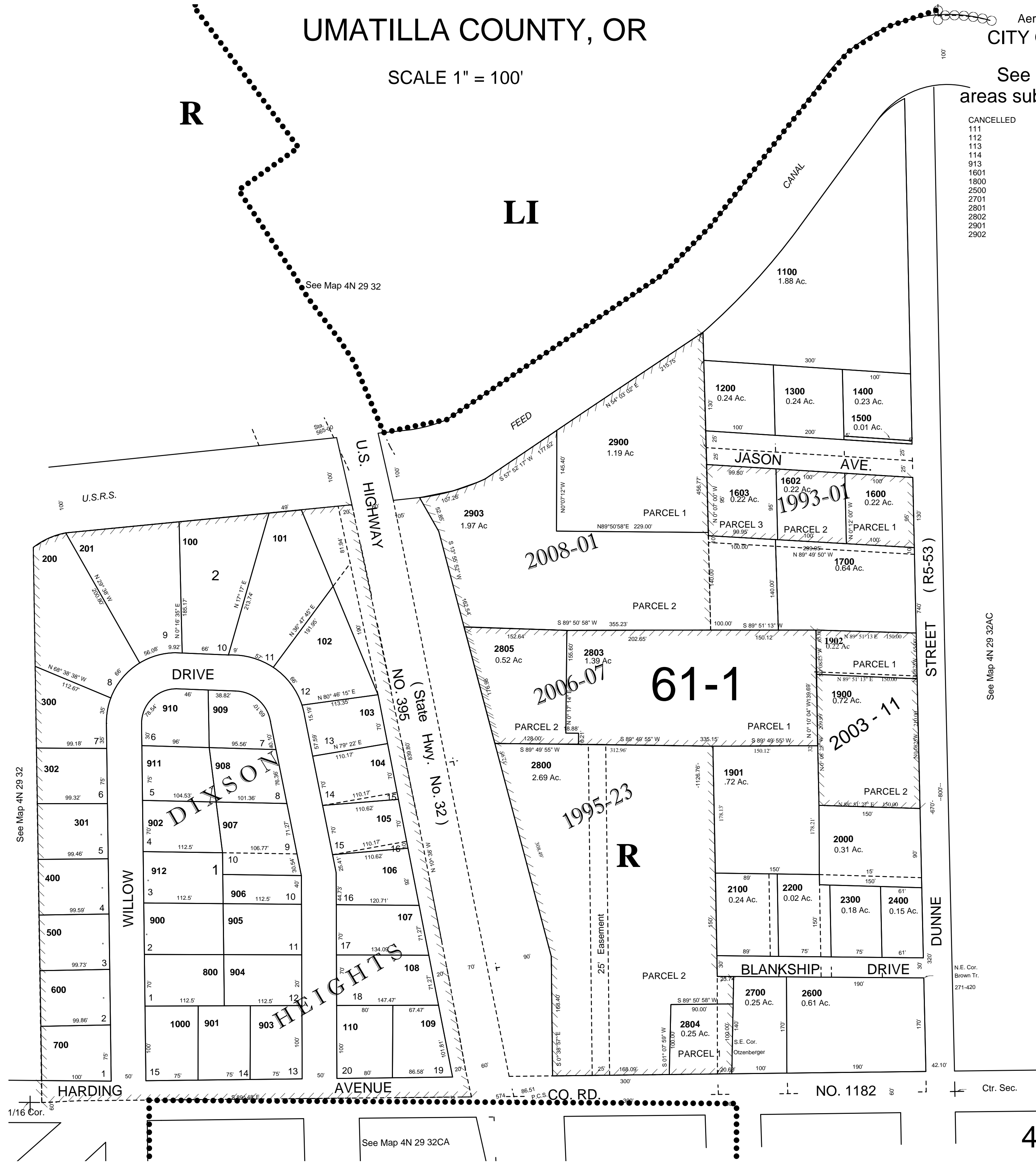
SCALE 1" = 100'

See FEMA FIRM for areas subject to flooding

R

LI

- CANCELLED
- 111
- 112
- 113
- 114
- 913
- 1601
- 1800
- 2500
- 2701
- 2801
- 2802
- 2901
- 2902



See Map 4N 29 32CA

4N2932BD