

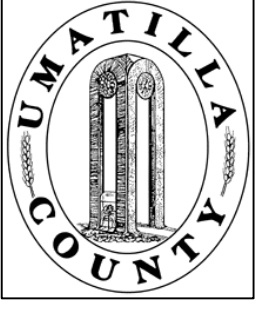
This map was prepared for Assessment purposes only.

SCALE: 1" = 1000'

SW 1/4 T4N R29E WM UMATILLA COUNTY, OR

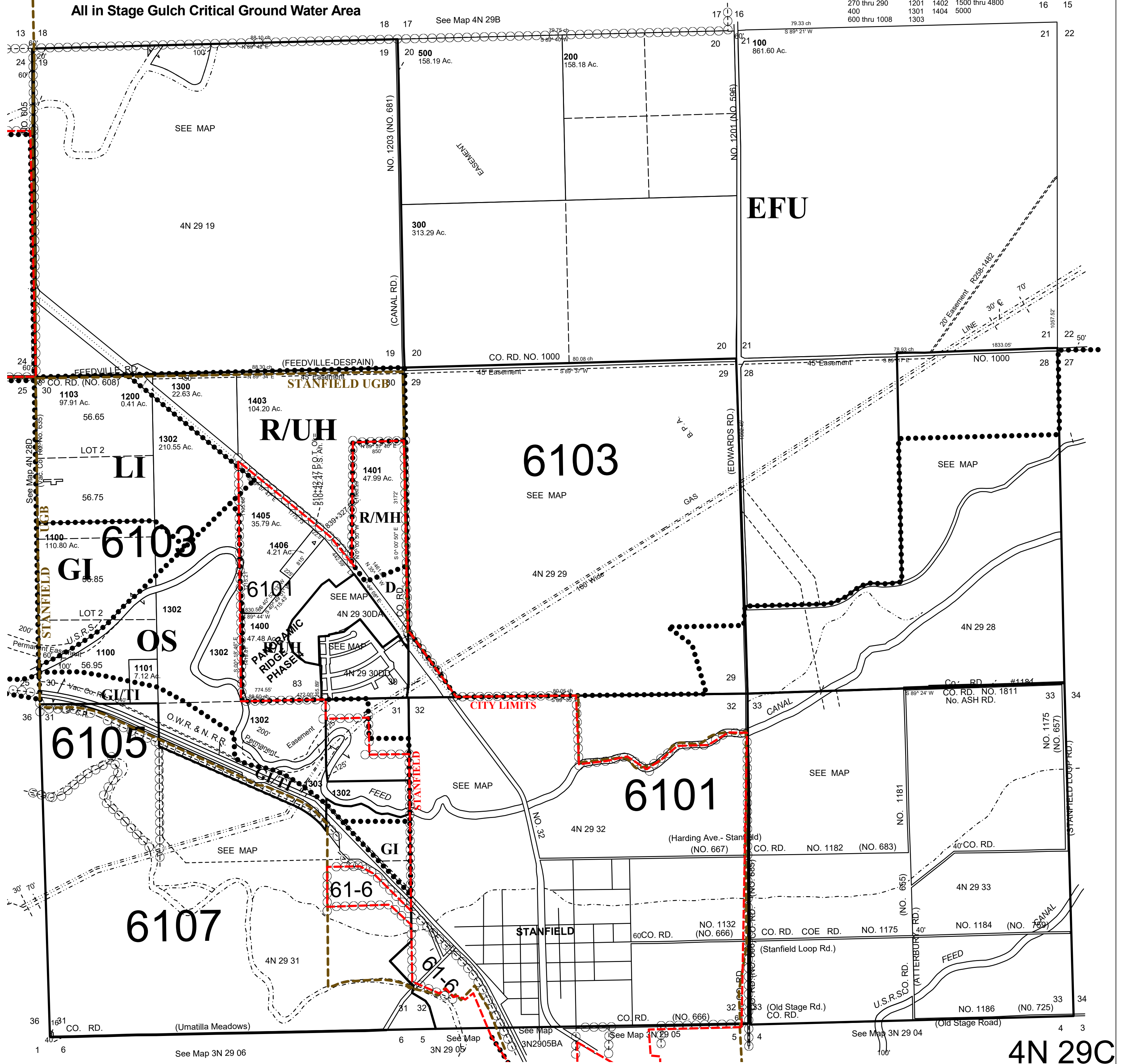
8/26/04

4N 29C



All in Stage Gulch Critical Ground Water Area

Cancelled No	1102	1304	1407 thru 1415	16	15
101 thru 103	1201	1402	1500 thru 4800		
270 thru 290	1301	1404	5000		
400	1303				
600 thru 1008					



4N 29C